

# TRACKS FOR FALL PROTECTION

## High Performance, Low Maintenance

**Rigid Lifelines® tracks** are self-cleaning, so trolleys continuously roll with minimal resistance. The enclosed track also protects trolley wheels while ensuring their accurate alignment. Plus, our rigid track design saves up to 3' of headroom since – unlike wire rope systems – there is no need for a “sag allowance.”

### Plain Track: PT Series

- Our lowest profile design keeps installation space requirements to a minimum
- Track can be custom-curved for specific paths

### Trussed Track: R Series

- Trussed design spans greater distance between supports
- Combination of high-strength to low-weight ratio reduces stress on structures

### Dual Trussed Track: DST Series

- All the advantages of the trussed design, plus dual tracks to allow two or more users to pass each other in the same work area

### Triple Trussed Track: TST Series

- All the advantages of the trussed design. Tracks designed so three workers can be connected and pass one another within the protected workspace.

### Quad Trussed Track: QST Series

- All the advantages of the trussed design. Track is designed so four workers can be connected and pass one another within the protected workspace.

### Alu-Track® Series

- Extruded from high-strength 6061-T6 aluminum alloy
- Maintenance-free aluminum is suitable for clean rooms, refrigeration areas, and other controlled environments

Plain Track  
PT Series

Trussed Track  
R Series

Dual Trussed Track  
DST Series

Triple Trussed Track  
TST Series

Quad Trussed Track  
QST Series

Alu-Track Series®

### Track Options

- Alu-Track®
- Steel track: rolled from ASTM A572, A607, or A715 grade steel; available with enamel, powder, epoxy, or galvanized coatings
- Stainless steel track: 304 stainless for 500 Series track for the following systems: Traveling Bridge, Ceiling Mounted Monorails, and Swing Arms
- Mylar™ lip seal: for additional track protection from very heavy dust or paint overspray applications

### Track Hardware

**Flush Hanger** for plain track series. Mount either parallel or perpendicular to ceiling beams.



### Standard Drop Hanger

for plain track series. Features support bracket, 12" drop rod, and adjustable roof beam clamp. Sway bracing required.



### Trussed Track Cross Mount Hanger

allows customers to hang a truss track to their existing structural beam.



### Trussed Track Drop Hanger

for trussed track series. Features support bracket, 12" drop rod, and adjustable roof beam clamp. Sway bracing required.



Mylar™ Lip Seal

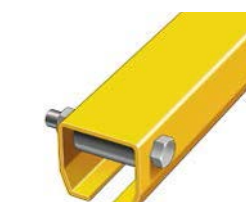


**Sloped Hangers** with drop rods that accommodate slopes up to 14°. Call us for system applicability.



### End Stop Bumper

standard on all systems. Bumper is through-bolted to track ends; resilient rubber increases impact resistance.



**Splice** for plain track series. Precisely align and connect track sections using two vertical and four horizontal adjustment screws (provided).



### Trussed Track Splice

for trussed track series. Two-piece; first splice same as above. Second splice is for truss and includes four vertical adjustment screws.

