

Pemco E-Line



Features

- Budget focused, and mass inventoried
- RoHS compliant industrial zinc finish for corrosion resistance
- Variety of the most popular sizes and tread widths
- Five brake options available on both swivel and rigid casters (Total Lock swivel only)
- Double ball raceways for smooth swiveling action
- 1/2" hollow axle with grease zerk and lock nut
- 1/4" thick steel leg construction
- 5/8" nut & bolt kingpin
- Weight capacities up to 1,250 lbs

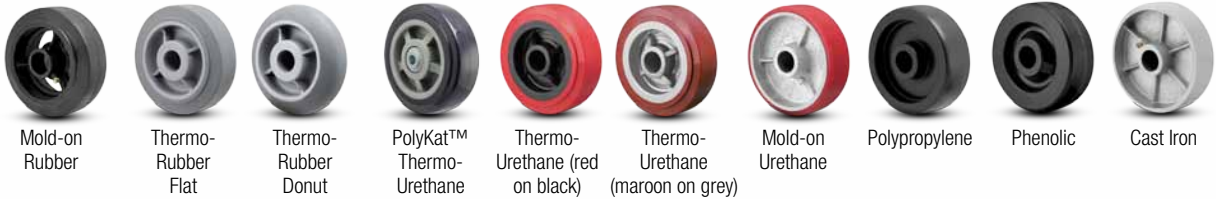
Applications

- Industrial Equipment
- Material Handling
- Store fixtures
- Carts
- Institutional Equipment

Options

- **Wheel Face Brake**
- **Tread Lock Brake**
- **5" and 7" Cam Brake**
- **Tread Lock Brake**
- Roller bearing is standard, but optional precision ball bearings and Delrin bearings also available. PolyKat requires Precision ball bearing.

Wheel Selection



	Mold-on Rubber	Thermo-Rubber Flat	Thermo-Rubber Donut	PolyKat™ Thermo-Urethane	Thermo-Urethane (red on black)	Thermo-Urethane (maroon on grey)	Mold-on Urethane	Polypropylene	Phenolic	Cast Iron
Floor Protection*	✓+	✓+	✓+	✓+	✓+	✓+	✓+	✓	✓	
Non-Marking		✓+	✓+	✓+	✓+	✓+	✓+	✓	✓	
Durability	✓	✓	✓	✓+	✓+	✓+	✓+	✓+	✓+	✓+
Cushioned Ride	✓+	✓+	✓+	✓	✓	✓	✓			
Chemical Resistance	✓	✓	✓	✓+	✓+	✓+	✓+	✓+	✓	✓+

*See page 48 for application details.

Brake Options

All brakes except total lock available on both swivel and rigid casters.



Total Lock
Integrated into swivel fork.

Wheel Face (WFB)
Not compatible with 4" and 5" rigid models.

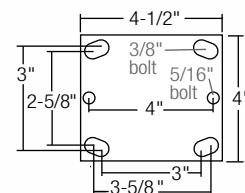
Tread Lock Brake (TBK)

Short Pedal 5" Cam (CAMS)*

Long Pedal 7" Cam (CAML)*

*Roller Bearing required for all CAM brakes. Long Pedal CAM will not work with 4" models.

Top Plate Dimensions



E-Line continues next page

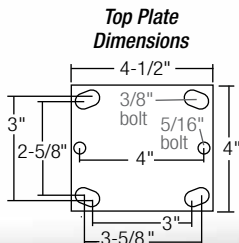


Pemco E-Line

Continued from previous page

Wheel Dia.	Tread Width	Wheel Type	Load Capacity (lbs)	Mount Height	Swivel Radius	Standard Bearing	Swivel Caster Part #	Rigid Caster Part #	Total Lock Brake	Caster Bearing Options	Other Brake Options
4"	2"	PolyKat™ Thermo-Urethane	600	5-5/8"	Swivel Rig 3-3/8" Brakes Total Lock 5-7/16" Wheel Face 6-13/32" Tread Lock 3-5/8" Cam Short 4-23/32" Cam Long Not Available	Precision Ball	ES4X2PKTP8	ER4X2PKTP8	ET4X2PKTP8	N/A	(+) WFB, TBK
		Thermo-Urethane (Red/Black)	500	5-5/8"		Roller	ES4X2TPU	ER4X2TPU	ET4X2TPU	(+) B, D	(+) WFB, TBK, CAMS
		Thermo-Urethane (Maroon/Grey)	500	5-5/8"		Roller	ES4X2TUM	ER4X2TUM	ET4X2TUM	(+) B, D	
		Mold-on Poly	800	5-5/8"		Roller	ES4X2MOP	ER4X2MOP	ET4X2MOP	(+) B	
		Mold-on Rubber	400	5-5/8"		Roller	ES4X2MOR	ER4X2MOR	ET4X2MOR	(+) B	
		Thermo-Rubber (Flat)	300	5-5/8"		Roller	ES4X2TPR	ER4X2TPR	ET4X2TPR	(+) B, D	
		Thermo-Rubber (Donut)	300	5-5/8"		Roller	ES4X2TPD	ER4X2TPD	ET4X2TPD	(+) B, D	
		Phenolic	800	5-5/8"		Roller	ES4X2PHN	ER4X2PHN	ET4X2PHN	(+) B, D	
		Polypropylene HD	500	5-5/8"		Roller	ES4X2POD	ER4X2POD	ET4X2POD	(+) B, D	
		Cast Iron	800	5-5/8"		Roller	ES4X2CIR	ER4X2CIR	ET4X2CIR	(+) B	
5"	2"	PolyKat™ Thermo-Urethane	800	6-1/2"	Swivel Rig 4" Brakes Total Lock 5-13/16" Wheel Face 7-1/32" Tread Lock 4" Cam Short 5" Cam Long 6"	Precision Ball	ES5X2PKTP8	ER5X2PKTP8	ET5X2PKTP8	N/A	(+) WFB, TBK
		Thermo-Urethane (Red/Black)	600	6-1/2"		Roller	ES5X2TPU	ER5X2TPU	ET5X2TPU	(+) B, D	(+) WFB, TBK, CAMS, CAML
		Thermo-Urethane (Maroon/Grey)	600	6-1/2"		Roller	ES5X2TUM	ER5X2TUM	ET5X2TUM	(+) B, D	
		Mold-on Poly	1100*	6-1/2"		Roller	ES5X2MOP	ER5X2MOP	ET5X2MOP	(+) B	
		Mold-on Rubber	400	6-1/2"		Roller	ES5X2MOR	ER5X2MOR	ET5X2MOR	(+) B	
		Thermo-Rubber (Flat)	350	6-1/2"		Roller	ES5X2TPR	ER5X2TPR	ET5X2TPR	(+) B, D	
		Thermo-Rubber (Donut)	350	6-1/2"		Roller	ES5X2TPD	ER5X2TPD	ET5X2TPD	(+) B, D	
		Phenolic	1000*	6-1/2"		Roller	ES5X2PHN	ER5X2PHN	ET5X2PHN	(+) B, D	
		Polypropylene HD	600	6-1/2"		Roller	ES5X2POD	ER5X2POD	ET5X2POD	(+) B, D	
		Cast Iron	1000*	6-1/2"		Roller	ES5X2CIR	ER5X2CIR	ET5X2CIR	(+) B	
6"	2"	PolyKat™ Thermo-Urethane	1000*	7-1/2"	Swivel Rig 4-3/4" Brakes Total Lock 6" Wheel Face 7-21/32" Tread Lock 4-3/4" Cam Short 5-1/8" Cam Long 6-5/32"	Precision Ball	ES6X2PKTP8	ER6X2PKTP8	ET6X2PKTP8	N/A	(+) WFB, TBK
		Thermo-Urethane (Red/Black)	720	7-1/2"		Roller	ES6X2TPU	ER6X2TPU	ET6X2TPU	(+) B, D	(+) WFB, TBK, CAMS, CAML
		Thermo-Urethane (Maroon/Grey)	720	7-1/2"		Roller	ES6X2TUM	ER6X2TUM	ET6X2TUM	(+) B, D	
		Mold-on Poly	1200*	7-1/2"		Roller	ES6X2MOP	ER6X2MOP	ET6X2MOP	(+) B	
		Mold-on Rubber	550	7-1/2"		Roller	ES6X2MOR	ER6X2MOR	ET6X2MOR	(+) B	
		Thermo-Rubber (Flat)	500	7-1/2"		Roller	ES6X2TPR	ER6X2TPR	ET6X2TPR	(+) B, D	
		Thermo-Rubber (Donut)	500	7-1/2"		Roller	ES6X2TPD	ER6X2TPD	ET6X2TPD	(+) B, D	
		Phenolic	1200*	7-1/2"		Roller	ES6X2PHN	ER6X2PHN	ET6X2PHN	(+) B, D	
		Polypropylene HD	600	7-1/2"		Roller	ES6X2POD	ER6X2POD	ET6X2POD	(+) B, D	
		Cast Iron	1200*	7-1/2"		Roller	ES6X2CIR	ER6X2CIR	ET6X2CIR	(+) B	
8"	2"	PolyKat™ Thermo-Urethane	1200*	9-1/2"	Swivel Rig 6-1/4" Brakes Total Lock 6-3/8" Wheel Face 9-1/16" Tread Lock 6-1/4" Cam Short 6-1/4" Cam Long 6-5/8"	Precision Ball	ES8X2PKTP8	ER8X2PKTP8	ET8X2PKTP8	N/A	(+) WFB, TBK
		Thermo-Urethane (Red/Black)	800	9-1/2"		Roller	ES8X2TPU	ER8X2TPU	ET8X2TPU	(+) B, D	(+) WFB, TBK, CAMS, CAML
		Thermo-Urethane (Maroon/Grey)	800	9-1/2"		Roller	ES8X2TUM	ER8X2TUM	ET8X2TUM	(+) B, D	
		Mold-on Poly	1250*	9-1/2"		Roller	ES8X2MOP	ER8X2MOP	ET8X2MOP	(+) B	
		Mold-on Rubber	600	9-1/2"		Roller	ES8X2MOR	ER8X2MOR	ET8X2MOR	(+) B	
		Thermo-Rubber (Flat)	600	9-1/2"		Roller	ES8X2TPR	ER8X2TPR	ET8X2TPR	(+) B, D	
		Thermo-Rubber (Donut)	600	9-1/2"		Roller	ES8X2TPD	ER8X2TPD	ET8X2TPD	(+) B, D	
		Phenolic	1250*	9-1/2"		Roller	ES8X2PHN	ER8X2PHN	ET8X2PHN	(+) B, D	
		Polypropylene HD	900	9-1/2"		Roller	ES8X2POD	ER8X2POD	ET8X2POD	(+) B, D	
		Cast Iron	1250*	9-1/2"		Roller	ES8X2CIR	ER8X2CIR	ET8X2CIR	(+) B	

*Maximum weight capacity of total lock brake casters is 900 lbs. each



Rubber swivel seal keeps dirt out and lube in for longer caster life. Add **RS** after ES. Example: **ESRS4X2MOR**

Bearing Options

