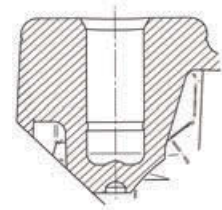




30kg




Castors for Furniture Series MONO

Series 5020: Housing made of Polyamide, painted
 Series A020: Housing made of Polypropylene, painted
 Load capacity tested according EN 12528



	Wheel diameter [mm]	Tread width [mm]	Center hole [mm]	Swivel Radius [mm]	Overall height [mm]	Load capacity [kg]	Order number
Swivel Casters							
	50	18	10	52.2	72	30	5020PJI050L51-10 RAL7035
	50	18	10	52.2	72	30	A020PJI050L51-10 RAL7035

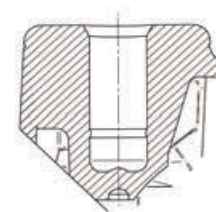
	Wheel diameter [mm]	Tread width [mm]	Center hole [mm]	Swivel Radius [mm]	Overall height [mm]	Load capacity [kg]	Order number
Swivel Casters with wheel brake							
	50	18	10	71.8	72	30	5025PJI050L51-10 RAL7035
	50	18	10	71.8	72	30	A025PJI050L51-10 RAL7035

 <p>Wheel: PJI Wheel center: Polypropylene, Tread: TENTEprene (thermoplastic rubber), plain bearing</p>	 <p>Large color range All casters available in other colors. Contact us for more details.</p>	 <p>Fittings Matching fittings can be found on page 189.</p>
--	--	---


40 - 70kg

Castors for Furniture Series MONO

Series 5020: Housing made of Polyamide, painted
 Series A020: Housing made of Polypropylene, painted
 Load capacity tested according EN 12528



	Wheel diameter [mm]	Tread width [mm]	Center hole [mm]	Swivel Radius [mm]	Overall height [mm]	Load capacity [kg]	Order number
Swivel Casters							
	80 80 100	24 24 24	10 10 10	74 74 90	104 104 120	70 40 70	5020PJH080L51-10 RAL7035 A020PJH080L51-10 RAL7035 5020PJH100L51-10 RAL7035
Swivel Casters with wheel brake							
	80 80 100	24 24 24	10 10 10		104 104 120	70 40 70	5025PJH080L51-10 RAL7035 A025PJH080L51-10 RAL7035 5025PJH100L51-10 RAL7035
Swivel Casters							
	80 80 100	24 24 24	10 10 10	74 74 90	104 104 120	70 40 70	5020PJH080L51-10 RAL9006 A020PJH080L51-10 RAL9006 5020PJH100L51-10 RAL9006
Swivel Casters with wheel brake							
	80 80 100	24 24 24	10 10 10		104 104 120	70 40 70	5025PJH080L51-10 RAL9006 A025PJH080L51-10 RAL9006 5025PJH100L51-10 RAL9006




Wheel: PJH
 Wheel center: Polypropylene, Tread: TENTEprene (thermoplastic rubber), with threadguards, plain bearing



Wheel: YGH electric conductive
 Wheel center: Polypropylene, Tread: TENTEprene (thermoplastic rubber), with threadguards, plain bearing



Large color range
 Various colours, painted or injected, available upon request. All versions available in RAL 9006 painted.



Fittings
 Matching fittings can be found on page 189.