

100 - 110kg

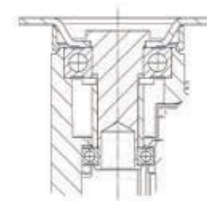
Twin Wheel Casters Series LINEA

Frame made from high grade synthetic material, precision ball bearing in

swivel head

Drawings of plate fittings see page 42 - 43

Load capacity tested according EN 12530

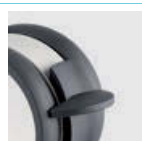


	Wheel diameter [mm]	Tread width [mm]	Plate size [mm]	Plate hole centers [mm]	Plate hole [mm]	Offset [mm]	Overall height [mm]	Load capacity [kg]		
Swivel Casters									Order number	
	100	20	77 x 67	61,5/56 x 51,5/46,5	8,5	32	124	100	5940UAP100P50 RAL9002	
	100	20	95 x 70	76/72 x 52/44,5	11	32	124	100	5940UAP100P52 RAL9002	
	100	20	77 x 67	61,5/56 x 51,5/46,5	8,5	32	124	100	5940XSP100P50 RAL9002	
	100	20	95 x 70	76/72 x 52/44,5	11	32	124	100	5940XSP100P52 RAL9002	
	125	20	77 x 67	61,5/56 x 51,5/46,5	8,5	40	148	110	5940UAP125P50 RAL9002	
	125	20	95 x 70	76/72 x 52/44,5	11	40	148	110	5940UAP125P52 RAL9002	
	125	20	77 x 67	61,5/56 x 51,5/46,5	8,5	40	148	110	5940XSP125P50 RAL9002	
	125	20	95 x 70	76/72 x 52/44,5	11	40	148	110	5940XSP125P52 RAL9002	
Swivel Casters with total lock									Order number	
	100	20	77 x 67	61,5/56 x 51,5/46,5	8,5	32	124	100	5947UAP100P50 RAL9002	
	100	20	95 x 70	76/72 x 52/44,5	11	32	124	100	5947UAP100P52 RAL9002	
	100	20	77 x 67	61,5/56 x 51,5/46,5	8,5	32	124	100	5947XSP100P50 RAL9002	
	100	20	95 x 70	76/72 x 52/44,5	11	32	124	100	5947XSP100P52 RAL9002	
	125	20	77 x 67	61,5/56 x 51,5/46,5	8,5	40	148	110	5947UAP125P50 RAL9002	
	125	20	95 x 70	76/72 x 52/44,5	11	40	148	110	5947UAP125P52 RAL9002	
	125	20	77 x 67	61,5/56 x 51,5/46,5	8,5	40	148	110	5947XSP125P50 RAL9002	
	125	20	95 x 70	76/72 x 52/44,5	11	40	148	110	5947XSP125P52 RAL9002	


Wheel: UAP

 Wheel body: Polyamide.
Tread: Polyurethane,
precision ball bearing.

Wheel: XSP electric conductive, non-marking

 Wheel body: Polyamide.
Tread: Polyurethane,
precision ball bearing.

Color options

These casters are available in other colors or with a grey brake pedal. Contact us for details.

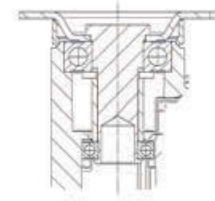

Kick-Pedal

All casters with lock are available in other colors or with a larger brake pedal as an option. Please indicate "Kick-Pedal" when ordering.



100 - 110kg Twin Wheel Casters Series LINEA

Frame made from high grade synthetic material, precision ball bearing in swivel head. Drawings of plate fittings see page 42 - 43
Load capacity tested according EN 12530



	Wheel diameter [mm]	Tread width [mm]	Plate size [mm]	Plate hole centers [mm]	Plate hole [mm]	Offset [mm]	Overall height [mm]	Load capacity [kg]	
Swivel Casters with directional lock									Order number
	100	20	77 x 67	61,5/56 x 51,5/46,5	8,5	32	124	100	5941UAP100P50 RAL9002
	100	20	95 x 70	76/72 x 52/44,5	11	32	124	100	5941UAP100P52 RAL9002
	100	20	77 x 67	61,5/56 x 51,5/46,5	8,5	32	124	100	5941XSP100P50 RAL9002
	100	20	95 x 70	76/72 x 52/44,5	11	32	124	100	5941XSP100P52 RAL9002
	125	20	77 x 67	61,5/56 x 51,5/46,5	8,5	40	148	110	5941UAP125P50 RAL9002
	125	20	95 x 70	76/72 x 52/44,5	11	40	148	110	5941UAP125P52 RAL9002
	125	20	95 x 70	76/72 x 52/44,5	11	40	148	110	5941XSP125P52 RAL9002
	125	20	77 x 67	61,5/56 x 51,5/46,5	8,5	40	148	110	5941XSP125P50 RAL9002
Combined Swivel Caster									Order number
	125	20	77 x 67	61,5/56 x 51,5/46,5	8,5	40	148	110	594CUAP125P50 RAL9002
	125	20	95 x 70	76/72 x 52/44,5	11	40	14-	110	594CUAP125P52 RAL7001
	125	20	95 x 70	76/72 x 52/44,5	11	40	148	110	594CUAP125P52 RAL9002
	125	20	77 x 67	61,5/56 x 51,5/46,5	8,5	40	148	110	594CXSP125P50 RAL9002
	125	20	95 x 70	76/72 x 52/44,5	11	40	14-	110	594CXSP125P52 RAL7001
	125	20	95 x 70	76/72 x 52/44,5	11	40	148	110	594CXSP125P52 RAL9002



Wheel: UAP
Wheel body: Polyamide.
Tread: Polyurethane,
precision ball bearing.



Wheel: XSP electric conductive, non-marking
Wheel body: Polyamide.
Tread: Polyurethane,
precision ball bearing.



Color options
These casters are available in other colors or with a grey brake pedal. Contact us for details.



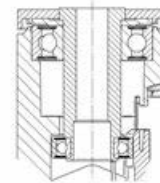
Kick-Pedal
All casters with lock are available with a larger brake pedal as an option. Please indicate "Kick-Pedal" when ordering.

100 - 110kg

Twin Wheel Casters Series LINEA

Frame made from high grade synthetic material, precision ball bearing in swivel head

Load capacity tested according EN 12530



	Wheel diameter [mm]	Tread width [mm]	Center hole [mm]			Offset [mm]	Overall height [mm]	Load capacity [kg]		Order number
Swivel Casters										
	100	20	11			32	118	100		5940UAP100P30-11 RAL9002
	100	20	13			32	118	100		5940UAP100P30-13 RAL9002
	100	20	11			32	118	100		5940XSP100P30-11 RAL9002
	100	20	13			32	118	100		5940XSP100P30-13 RAL9002
	125	20	11			40	143	110		5940UAP125P30-11 RAL9002
	125	20	13			40	143	110		5940UAP125P30-13 RAL9002
	125	20	11			40	143	110		5940XSP125P30-11 RAL9002
	125	20	13			40	143	110		5940XSP125P30-13 RAL9002
Swivel Casters with total lock										Order number
	100	20	11			32	118	100		5947UAP100P30-11 RAL9002
	100	20	13			32	118	100		5947UAP100P30-13 RAL9002
	100	20	11			32	118	100		5947XSP100P30-11 RAL9002
	100	20	13			32	118	100		5947XSP100P30-13 RAL9002
	125	20	11			40	143	110		5947UAP125P30-11 RAL9002
	125	20	13			40	143	110		5947UAP125P30-13 RAL9002
	125	20	11			40	143	110		5947XSP125P30-11 RAL9002
	125	20	13			40	143	110		5947XSP125P30-13 RAL9002
Swivel Casters with directional lock										Order number
	100	20	11			32	118	100		5941UAP100P30-11 RAL9002
	100	20	13			32	118	100		5941UAP100P30-13 RAL9002
	100	20	11			32	118	100		5941XSP100P30-11 RAL9002
	100	20	13			32	118	100		5941XSP100P30-13 RAL9002
	125	20	11			40	143	110		5941UAP125P30-11 RAL9002
	125	20	13			40	143	110		5941UAP125P30-13 RAL9002
	125	20	11			40	143	110		5941XSP125P30-11 RAL9002
	125	20	13			40	143	110		5941XSP125P30-13 RAL9002


Wheel: UAP

Wheel body: Polyamide.
Tread: Polyurethane,
precision ball bearing.


Wheel: XSP electric conductive, non-marking

Wheel body: Polyamide.
Tread: Polyurethane,
precision ball bearing.


Color options

These casters are available in other colors or with a grey brake pedal. Contact us for details.

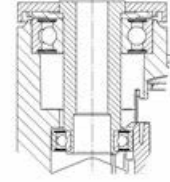

Kick-Pedal

All casters with lock are available with a larger brake pedal as an option. Please indicate "Kick-Pedal" when ordering.



110kg Twin Wheel Casters Series LINEA

Frame made from high grade synthetic material, precision ball bearing in swivel head
Load capacity tested according EN 12530



Combined Swivel Caster	Wheel diameter [mm]	Tread width [mm]	Center hole [mm]			Offset [mm]	Overall height [mm]	Load capacity [kg]	Order number
	125	20	11			40	143	110	594CUAP125P30-11 RAL9002
	125	20	13			40	143	110	594CUAP125P30-13 RAL9002
	125	20	11			40	143	110	594CXSP125P30-11 RAL9002
	125	20	13			40	143	110	594CXSP125P30-13 RAL9002

<p>Wheel: UAP Wheel body: Polyamide. Tread: Polyurethane, precision ball bearing.</p>	<p>Wheel: XSP electric conductive, non-marking Wheel body: Polyamide. Tread: Polyurethane, precision ball bearing.</p>	<p>Color options These casters are available in other colors or with a grey brake pedal. Contact us for details.</p>	<p>Kick-Pedal All casters with lock are available with a larger brake pedal as an option. Please indicate "Kick-Pedal" when ordering.</p>
--	---	---	--

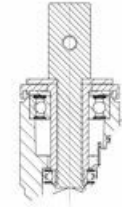
100 - 110kg

Twin Wheel Casters Series LINEA

Frame made from high grade synthetic material, precision ball bearing in swivel head

Load capacity tested according EN 12530

Load capacity tested according EN 12530



	Wheel diameter [mm]	Tread width [mm]	Bolt-Ø [mm]	Bolt length [mm]	Offset [mm]	Overall height [mm]	Load capacity [kg]	
Swivel Casters								Order number
	100	20	22	40	32	120	100	5940UAP100R05-22 RAL9002
	100	20	28	40	32	120	100	5940UAP100R05-28 RAL9002
	100	20	22	40	32	120	100	5940XSP100R05-22 RAL9002
	100	20	28	40	32	120	100	5940XSP100R05-28 RAL9002
	125	20	22	40	40	145	110	5940UAP125R05-22 RAL9002
	125	20	28	40	40	145	110	5940UAP125R05-28 RAL9002
	125	20	22	40	40	145	110	5940XSP125R05-22 RAL9002
	125	20	28	40	40	145	110	5940XSP125R05-28 RAL9002
Swivel Casters with total lock								Order number
	100	20	22	40	32	120	100	5947UAP100R05-22 RAL9002
	100	20	28	40	32	120	100	5947UAP100R05-28 RAL9002
	100	20	22	40	32	120	100	5947XSP100R05-22 RAL9002
	100	20	28	40	32	120	100	5947XSP100R05-28 RAL9002
	125	20	22	40	40	145	110	5947UAP125R05-22 RAL9002
	125	20	28	40	40	145	110	5947UAP125R05-28 RAL9002
	125	20	22	40	40	145	110	5947XSP125R05-22 RAL9002
	125	20	28	40	40	145	110	5947XSP125R05-28 RAL9002
Swivel Casters with directional lock								Order number
	100	20	22	40	32	120	100	5941UAP100R05-22 RAL9002
	100	20	28	40	32	120	100	5941UAP100R05-28 RAL9002
	100	20	22	40	32	120	100	5941XSP100R05-22 RAL9002
	100	20	28	40	32	120	100	5941XSP100R05-28 RAL9002
	125	20	22	40	40	145	110	5941UAP125R05-22 RAL9002
	125	20	28	40	40	145	110	5941UAP125R05-28 RAL9002
	125	20	22	40	40	145	110	5941XSP125R05-22 RAL9002
	125	20	28	40	40	145	110	5941XSP125R05-28 RAL9002

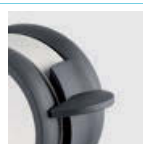
Fitting Options: Also available with R05-25.4 and R05-22 mm solid stems.



Wheel: UAP
Wheel body: Polyamide.
Tread: Polyurethane,
precision ball bearing.



Wheel: XSP
electric conductive, non-marking
Wheel body: Polyamide.
Tread: Polyurethane,
precision ball bearing.



Color options
These casters are available in other colors or with a grey brake pedal. Contact us for details.

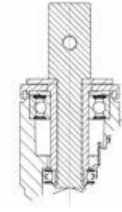


Kick-Pedal
All casters with lock are available with a larger brake pedal as an option. Please indicate "Kick-Pedal" when ordering.





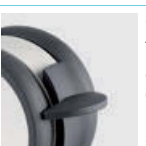
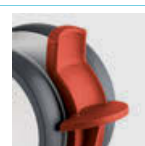
110kg Twin Wheel Casters Series LINEA

Frame made from high grade synthetic material, precision ball bearing in swivel head
Load capacity tested according EN 12530



Combined Swivel Caster	Wheel diameter [mm]	Tread width [mm]	Bolt-Ø [mm]	Bolt length [mm]	Offset [mm]	Overall height [mm]	Load capacity [kg]	Order number
	125	20	28	40	40	145	110	594CUAP125R05-28 RAL9002
	125	20	22	40	40	145	110	594CUAP125R05-22 RAL9002
	125	20	28	40	40	145	110	594CXSP125R05-28 RAL9002
	125	20	22	40	40	145	110	594CXSP125R05-22 RAL9002

Fitting Options: Also available with R05-25.4 and R05-22 mm solid stems.

 <p>Wheel: UAP Wheel body: Polyamide. Tread: Polyurethane, precision ball bearing.</p>	 <p>Wheel: XSP electric conductive, non-marking Wheel body: Polyamide. Tread: Polyurethane, precision ball bearing.</p>	 <p>Color options These casters are available in other colors or with a grey brake pedal. Contact us for details.</p>	 <p>Kick-Pedal All casters with lock are available with a larger brake pedal as an option. Please indicate "Kick-Pedal" when ordering.</p>
--	---	---	--

100 - 110kg

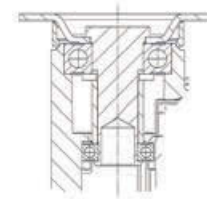


Twin Wheel Casters Series LINEA stainless

Frame made from high grade synthetic material, precision ball bearing in swivel head

Drawings of plate fittings see page 42 - 43

Load capacity tested according EN 12530



	Wheel diameter [mm]	Tread width [mm]	Plate size [mm]	Plate hole centers [mm]	Plate hole [mm]	Offset [mm]	Overall height [mm]	Load capacity [kg]		
Swivel Casters										Order number
	100	20	77 x 67	61,5/56 x 51,5/46,5	8,5	32	124	100		5940UAC100P50 RAL9002
	100	20	77 x 67	61,5/56 x 51,5/46,5	8,5	32	124	100		5940XSC100P50 RAL9002
	125	20	77 x 67	61,5/56 x 51,5/46,5	8,5	40	148	110		5940UAC125P50 RAL9002
	125	20	77 x 67	61,5/56 x 51,5/46,5	8,5	40	148	110		5940XSC125P50 RAL9002
	100	20	95 x 70	76/72 x 52/44,5	11	32	124	100		5940UAC100P52 RAL9002
	125	20	95 x 70	76/72 x 52/44,5	11	40	148	110		5940UAC125P52 RAL9002
	100	20	95 x 70	76/72 x 52/44,5	11	32	124	100		5940XSC100P52 RAL9002
	125	20	95 x 70	76/72 x 52/44,5	11	40	148	110		5940XSC125P52 RAL9002
Swivel Casters with total lock										Order number
	100	20	77 x 67	61,5/56 x 51,5/46,5	8,5	32	124	100		5947UAC100P50 RAL9002
	100	20	77 x 67	61,5/56 x 51,5/46,5	8,5	32	124	100		5947XSC100P50 RAL9002
	125	20	77 x 67	61,5/56 x 51,5/46,5	8,5	40	148	110		5947UAC125P50 RAL9002
	125	20	77 x 67	61,5/56 x 51,5/46,5	8,5	40	148	110		5947XSC125P50 RAL9002
	100	20	95 x 70	76/72 x 52/44,5	11	32	124	100		5947UAC100P52 RAL9002
	125	20	95 x 70	76/72 x 52/44,5	11	40	148	110		5947UAC125P52 RAL9002
	100	20	95 x 70	76/72 x 52/44,5	11	32	124	100		5947XSC100P52 RAL9002
	125	20	95 x 70	76/72 x 52/44,5	11	40	148	110		5947XSC125P52 RAL9002



Wheel: UAC
Wheel center: Polyamide, Tread: Polyurethane, precision ball bearing, stainless, washable



Wheel: XSC electric conductive, non-marking
Wheel center: Polyamide, Tread: Polyurethane, precision ball bearing, stainless, washable



Color options
These casters are available in other colors or with a grey brake pedal. Contact us for details.



Kick-Pedal
All casters with lock are available with a larger brake pedal as an option. Please indicate "Kick-Pedal" when ordering.

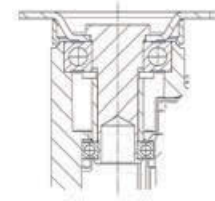


100 - 110kg



Twin Wheel Casters Series LINEA stainless

Frame made from high grade synthetic material, precision ball bearing in swivel head
 Drawings of plate fittings see page 42 - 43
 Load capacity tested according EN 12530



Swivel Casters with directional lock	Wheel diameter [mm]	Tread width [mm]	Plate size [mm]	Plate hole centers [mm]	Plate hole [mm]	Offset [mm]	Overall height [mm]	Load capacity [kg]	Order number
	100	20	77 x 67	61,5/56 x 51,5/46,5	8,5	32	124	100	5941UAC100P50 RAL9002
	100	20	77 x 67	61,5/56 x 51,5/46,5	8,5	32	124	100	5941XSC100P50 RAL9002
	125	20	77 x 67	61,5/56 x 51,5/46,5	8,5	40	148	110	5941UAC125P50 RAL9002
	125	20	77 x 67	61,5/56 x 51,5/46,5	8,5	40	148	110	5941XSC125P50 RAL9002
	100	20	95 x 70	76/72 x 52/44,5	11	32	124	100	5941UAC100P52 RAL9002
	125	20	95 x 70	76/72 x 52/44,5	11	40	148	110	5941UAC125P52 RAL9002

Combined Swivel Caster	Wheel diameter [mm]	Tread width [mm]	Plate size [mm]	Plate hole centers [mm]	Plate hole [mm]	Offset [mm]	Overall height [mm]	Load capacity [kg]	Order number
	125	20	77 x 67	61,5/56 x 51,5/46,5	8,5	40	148	110	594CUAC125P50 RAL9002
	125	20	77 x 67	61,5/56 x 51,5/46,5	8,5	40	148	110	594CXSC125P50 RAL9002
	125	20	95 x 70	76/72 x 52/44,5	11	40	148	110	594CUAC125P52 RAL9002
	125	20	95 x 70	76/72 x 52/44,5	11	40	148	110	594CXSC125P52 RAL9002

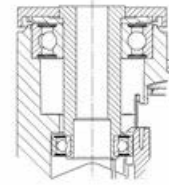
 <p>Wheel: UAC Wheel center: Polyamide, Tread: Polyurethane, precision ball bearing, stainless, washable</p>	 <p>Wheel: XSC electric conductive, non-marking Wheel center: Polyamide, Tread: Polyurethane, precision ball bearing, stainless, washable</p>	 <p>Color options These casters are available in other colors or with a grey brake pedal. Contact us for details.</p>	 <p>Kick-Pedal All casters with lock are available with a larger brake pedal as an option. Please indicate "Kick-Pedal" when ordering.</p>
---	--	--	---

100 - 110kg



Twin Wheel Casters Series LINEA stainless

Frame made from high grade synthetic material, precision ball bearing in swivel head
Load capacity tested according EN 12530



	Wheel diameter [mm]	Tread width [mm]	Center hole [mm]			Offset [mm]	Overall height [mm]	Load capacity [kg]		
Swivel Casters										Order number
	100	20	11			32	118	100		5940UAC100P30-11 RAL9002
	100	20	13			32	118	100		5940UAC100P30-13 RAL9002
	100	20	11			32	118	100		5940XSC100P30-11 RAL9002
	100	20	13			32	118	100		5940XSC100P30-13 RAL9002
	125	20	11			40	143	110		5940UAC125P30-11 RAL9002
	125	20	13			40	143	110		5940UAC125P30-13 RAL9002
	125	20	11			40	143	110		5940XSC125P30-11 RAL9002
	125	20	13			40	143	110		5940XSC125P30-13 RAL9002
Swivel Casters with total lock										Order number
	100	20	11			32	118	100		5947UAC100P30-11 RAL9002
	100	20	13			32	118	100		5947UAC100P30-13 RAL9002
	100	20	11			32	118	100		5947XSC100P30-11 RAL9002
	100	20	13			32	118	100		5947XSC100P30-13 RAL9002
	125	20	11			40	143	110		5947UAC125P30-11 RAL9002
	125	20	13			40	143	110		5947UAC125P30-13 RAL9002
	125	20	11			40	143	110		5947XSC125P30-11 RAL9002
	125	20	13			40	143	110		5947XSC125P30-13 RAL9002
Swivel Casters with directional lock										Order number
	100	20	11			32	118	100		5941UAC100P30-11 RAL9002
	100	20	13			32	118	100		5941UAC100P30-13 RAL9002
	100	20	11			32	118	100		5941XSC100P30-11 RAL9002
	100	20	13			32	118	100		5941XSC100P30-13 RAL9002
	125	20	11			40	143	110		5941UAC125P30-11 RAL9002
	125	20	13			40	143	110		5941UAC125P30-13 RAL9002
	125	20	11			40	143	110		5941XSC125P30-11 RAL9002
	125	20	13			40	143	110		5941XSC125P30-13 RAL9002



Wheel: UAC
Wheel center: Polyamide, Tread: Polyurethane, precision ball bearing, stainless, washable



Wheel: XSC electric conductive, non-marking
Wheel center: Polyamide, Tread: Polyurethane, precision ball bearing, stainless, washable



Color options
These casters are available in other colors or with a grey brake pedal. Contact us for details.



Kick-Pedal
All casters with lock are available with a larger brake pedal as an option. Please indicate "Kick-Pedal" when ordering.

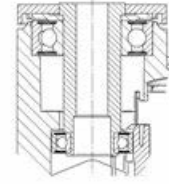


110kg



Twin Wheel Casters Series LINEA stainless

Frame made from high grade synthetic material, precision ball bearing in swivel head
 Load capacity tested according EN 12530



Combined Swivel Caster	Wheel diameter [mm]	Tread width [mm]	Center hole [mm]			Offset [mm]	Overall height [mm]	Load capacity [kg]	Order number
	125	20	11			40	143	110	594CUAC125P30-11 RAL9002
	125	20	13			40	143	110	594CUAC125P30-13 RAL9002
	125	20	11			40	143	110	594CXSC125P30-11 RAL9002
	125	20	13			40	143	110	594CXSC125P30-13 RAL9002



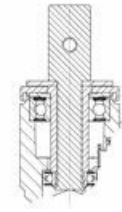
<p>Wheel: UAC Wheel center: Polyamide, Tread: Polyurethane, precision ball bearing, stainless, washable</p>	<p>Wheel: XSC electric conductive, non-marking Wheel center: Polyamide, Tread: Polyurethane, precision ball bearing, stainless, washable</p>	<p>Color options These casters are available in other colors or with a grey brake pedal. Contact us for details.</p>	<p>Kick-Pedal All casters with lock are available with a larger brake pedal as an option. Please indicate "Kick-Pedal" when ordering.</p>
---	--	--	---

100 - 110kg



Twin Wheel Casters Series LINEA stainless

Frame made from high grade synthetic material, precision ball bearing in swivel head
Load capacity tested according EN 12530



	Wheel diameter [mm]	Tread width [mm]	Bolt-Ø [mm]	Bolt length [mm]	Offset [mm]	Overall height [mm]	Load capacity [kg]	
Swivel Casters								Order number
	100	20	22	40	32	120	100	5940UAC100R05-22 RAL9002
	100	20	28	40	32	120	100	5940UAC100R05-28 RAL9002
	100	20	22	40	32	120	100	5940XSC100R05-22 RAL9002
	100	20	28	40	32	120	100	5940XSC100R05-28 RAL9002
	125	20	22	40	40	145	110	5940UAC125R05-22 RAL9002
	125	20	28	40	40	145	110	5940UAC125R05-28 RAL9002
	125	20	22	40	40	145	110	5940XSC125R05-22 RAL9002
	125	20	28	40	40	145	110	5940XSC125R05-28 RAL9002
Swivel Casters with total lock								Order number
	100	20	22	40	32	120	100	5947UAC100R05-22 RAL9002
	100	20	28	40	32	120	100	5947UAC100R05-28 RAL9002
	100	20	22	40	32	120	100	5947XSC100R05-22 RAL9002
	100	20	28	40	32	120	100	5947XSC100R05-28 RAL9002
	125	20	22	40	40	145	110	5947UAC125R05-22 RAL9002
	125	20	28	40	40	145	110	5947UAC125R05-28 RAL9002
	125	20	22	40	40	145	110	5947XSC125R05-22 RAL9002
	125	20	28	40	40	145	110	5947XSC125R05-28 RAL9002
Swivel Casters with directional lock								Order number
	100	20	22	40	32	120	100	5941UAC100R05-22 RAL9002
	100	20	28	40	32	120	100	5941UAC100R05-28 RAL9002
	100	20	22	40	32	120	100	5941XSC100R05-22 RAL9002
	100	20	28	40	32	120	100	5941XSC100R05-28 RAL9002
	125	20	22	40	40	145	110	5941UAC125R05-22 RAL9002
	125	20	28	40	40	145	110	5941UAC125R05-28 RAL9002
	125	20	22	40	40	145	110	5941XSC125R05-22 RAL9002
	125	20	28	40	40	145	110	5941XSC125R05-28 RAL9002

Fitting Options: Also available with R05-25.4 and R05-22 mm solid stems.

 <p>Wheel: UAC Wheel center: Polyamide, Tread: Polyurethane, precision ball bearing, stainless, washable</p>	 <p>Wheel: XSC electric conductive, non-marking Wheel center: Polyamide, Tread: Polyurethane, precision ball bearing, stainless, washable</p>	 <p>Color options These casters are available in other colors or with a grey brake pedal. Contact us for details.</p>	 <p>Kick-Pedal All casters with lock are available with a larger brake pedal as an option. Please indicate "Kick-Pedal" when ordering.</p>
--	---	---	--

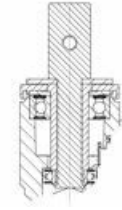


110kg



Twin Wheel Casters Series LINEA stainless

Frame made from high grade synthetic material, precision ball bearing in swivel head
Load capacity tested according EN 12530



Combined Swivel Caster	Wheel diameter [mm]	Tread width [mm]	Bolt-Ø [mm]	Bolt length [mm]	Offset [mm]	Overall height [mm]	Load capacity [kg]	Order number
	125	20	22	40	40	145	110	594CUAC125R05-22 RAL9002
	125	20	28	40	40	145	110	594CUAC125R05-28 RAL9002
	125	20	22	40	40	145	110	594CXSC125R05-22 RAL9002
	125	20	28	40	40	145	110	594CXSC125R05-28 RAL9002

Fitting Options: Also available with R05-25.4 and R05-22 mm solid stems.

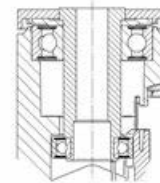
 <p>Wheel: UAC Wheel center: Polyamide, Tread: Polyurethane, precision ball bearing, stainless, washable</p>	 <p>Wheel: XSC electric conductive, non-marking Wheel center: Polyamide, Tread: Polyurethane, precision ball bearing, stainless, washable</p>	 <p>Color options These casters are available in other colors or with a grey brake pedal. Contact us for details.</p>	 <p>Kick-Pedal All casters with lock are available with a larger brake pedal as an option. Please indicate "Kick-Pedal" when ordering.</p>
--	---	---	--

90 - 100kg

Twin Wheel Casters Series LINEA Low Height

Frame made from high grade synthetic material, precision ball bearing in swivel head

Load capacity tested according EN 12530



	Wheel diameter [mm]	Tread width [mm]	Center hole [mm]			Offset [mm]	Overall height [mm]	Load capacity [kg]		Order number
Swivel Casters										
	75	15	8			23	78	90		5940UAP075P30-8 LH RAL7001
	75	15	8			23	78	90		5940UAP075P30-8 LH RAL9002
	75	15	10			23	78	90		5940UAP075P30-10 LH RAL7001
	75	15	10			23	78	90		5940UAP075P30-10 LH RAL9002
	100	20	8			32	103	100		5940UAP100P30-8 LH RAL7001
	100	20	8			32	103	100		5940UAP100P30-8 LH RAL9002
	100	20	10			32	103	100		5940UAP100P30-10 LH RAL7001
	100	20	10			32	103	100		5940UAP100P30-10 LH RAL9002
Swivel Casters with wheel brake										Order number
	75	15	8			23	78	90		5945UAP075P30-8 LH RAL7001
	75	15	8			23	78	90		5945UAP075P30-8 LH RAL9002
	75	15	10			156	78	90		5945UAP075P30-10 LH RAL7001
	75	15	10			23	78	90		5945UAP075P30-10 LH RAL9002
	100	20	8			32	103	100		5945UAP100P30-8 LH RAL7001
	100	20	8			32	103	100		5945UAP100P30-8 LH RAL9002
	100	20	10			32	103	100		5945UAP100P30-10 LH RAL7001
	100	20	10			32	103	100		5945UAP100P30-10 LH RAL9002


Wheel: UAP

Wheel body: Polyamide.
Tread: Polyurethane,
precision ball bearing.


Color options

These casters are available in other colors or with a grey brake pedal. Contact us for details.


Kick-Pedal

All casters with lock are available with a larger brake pedal as an option. Please indicate "Kick-Pedal" when ordering.