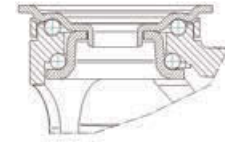




# 100kg Design Casters Series GALEA

Housing made of Polyamide, double ball bearing swivel head  
 Drawings of plate fittings see page 42 - 43.  
 Load capacity tested according EN 12530



	Wheel diameter [mm]	Tread width [mm]	Plate size [mm]	Plate hole centers [mm]	Plate hole [mm]	Offset [mm]	Overall height [mm]	Load capacity [kg]		
<b>Swivel Casters</b>									<b>Order number</b>	
	100	30	77 x 67	61,5/56 x 51,5/46,5	8,5	40	137	100	<b>5070PJH100P50</b>	
	100	30	77 x 67	61,5/56 x 51,5/46,5	8,5	40	137	100	<b>5070YGH100P50</b>	
	125	30	77 x 67	61,5/56 x 51,5/46,5	8,5	40	159	100	<b>5070PJH125P50</b>	
	125	30	77 x 67	61,5/56 x 51,5/46,5	8,5	40	159	100	<b>5070YGH125P50</b>	
<b>Swivel Casters with total lock</b>									<b>Order number</b>	
	100	30	77 x 67	61,5/56 x 51,5/46,5	8,5	40	137	100	<b>5077PJH100P50</b>	
	100	30	77 x 67	61,5/56 x 51,5/46,5	8,5	40	137	100	<b>5077YGH100P50</b>	
	125	30	77 x 67	61,5/56 x 51,5/46,5	8,5	40	159	100	<b>5077PJH125P50</b>	
	125	30	77 x 67	61,5/56 x 51,5/46,5	8,5	40	159	100	<b>5077YGH125P50</b>	
<b>Swivel Casters with directional lock</b>									<b>Order number</b>	
	100	30	90 x 70	70/60 x 55/50	8	40	138	100	<b>5071PJH100P60-90x70</b>	
	100	30	90 x 70	70/60 x 55/50	8	40	138	100	<b>5071YGH100P60-90x70</b>	
	125	30	90 x 70	70/60 x 55/50	8	40	163	100	<b>5071PJH125P60-90x70</b>	
	125	30	90 x 70	70/60 x 55/50	8	40	163	100	<b>5071YGH125P60-90x70</b>	

Fitting Options:  
 Also available with P52 (95x70) plate. Plate hole centers: 52/44.5 x 76/72.  
 Plate Hole: 11 mm.

**Wheel: PJO**  
 Wheel center made of Polypropylene, Tread: TENTEprene (thermoplastic rubber), grey non-marking, plain bearing

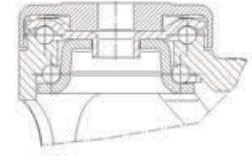
**Wheel: PJH**  
 Wheel center: Polypropylene, Tread: TENTEprene (thermoplastic rubber), with threadguards, plain bearing

**Wheel: YGH electric conductive**  
 Wheel center: Polypropylene, Tread: TENTEprene (thermoplastic rubber), with threadguards, plain bearing

**Color options**  
 These casters are available in other colors or with a grey brake pedal. Contact us for details.

# 100kg Design Casters Series GALEA

Housing made of Polyamide, double ball bearing swivel head  
Load capacity tested according EN 12530



	Wheel diameter [mm]	Tread width [mm]	Center hole [mm]			Offset [mm]	Overall height [mm]	Load capacity [kg]		
<b>Swivel Casters</b>									<b>Order number</b>	
	100	30	11			40	139	100	<b>5070PJH100P30-11</b>	
	100	30	13			40	139	100	<b>5070PJH100P30-13</b>	
	100	30	11			40	139	100	<b>5070YGH100P30-11</b>	
	100	30	13			40	139	100	<b>5070YGH100P30-13</b>	
	125	30	11			40	162	100	<b>5070PJH125P30-11</b>	
	125	30	13			40	162	100	<b>5070PJH125P30-13</b>	
	125	30	11			40	162	100	<b>5070YGH125P30-11</b>	
	125	30	13			40	162	100	<b>5070YGH125P30-13</b>	
<b>Rigid Casters</b>									<b>Order number</b>	
	100	30	11			40	139	100	<b>5098PJH100P30-11</b>	
	100	30	13			40	139	100	<b>5098PJH100P30-13</b>	
	100	30	11			40	139	100	<b>5098YGH100P30-11</b>	
	100	30	13			40	139	100	<b>5098YGH100P30-13</b>	
	125	30	11			40	162	100	<b>5098PJH125P30-11</b>	
	125	30	13			40	162	100	<b>5098PJH125P30-13</b>	
	125	30	11			40	162	100	<b>5098YGH125P30-11</b>	
	125	30	13			40	162	100	<b>5098YGH125P30-13</b>	
<b>Fixed Caster with wheel brake</b>									<b>Order number</b>	
	100	30	11			40	139	100	<b>5095PJH100P30-11</b>	
	100	30	13			40	139	100	<b>5095PJH100P30-13</b>	
	100	30	11			40	139	100	<b>5095YGH100P30-11</b>	
	100	30	13			40	139	100	<b>5095YGH100P30-13</b>	
	125	30	11			40	162	100	<b>5095PJH125P30-11</b>	
	125	30	13			40	162	100	<b>5095PJH125P30-13</b>	
	125	30	11			40	162	100	<b>5095YGH125P30-11</b>	
	125	30	13			40	162	100	<b>5095YGH125P30-13</b>	


**Wheel: PJO**

Also available with PJO  
Wheel: Wheel center made of Polypropylene, Tread: TENTEprene (thermoplastic rubber), grey non-marking, plain bearing


**Wheel: PJH**

Wheel center: Polypropylene, Tread: TENTEprene (thermoplastic rubber), with threadguards, plain bearing


**Wheel: YGH electric conductive**

Wheel center: Polypropylene, Tread: TENTEprene (thermoplastic rubber), with threadguards, plain bearing

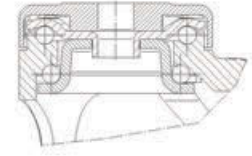

**Color options**

These casters are available in other colors or with a grey brake pedal. Contact us for details.



# 100kg Design Casters Series GALEA

Housing made of Polyamide, double ball bearing swivel head  
Load capacity tested according EN 12530



	Wheel diameter [mm]	Tread width [mm]	Center hole [mm]			Offset [mm]	Overall height [mm]	Load capacity [kg]		
Swivel Casters with total lock									Order number	
	100	30	11			40	139	100	5077PJH100P30-11	
	100	30	13			40	139	100	5077PJH100P30-13	
	100	30	11			40	139	100	5077YGH100P30-11	
	100	30	13			40	139	100	5077YGH100P30-13	
	125	30	11			40	162	100	5077PJH125P30-11	
	125	30	13			40	162	100	5077PJH125P30-13	
	125	30	11			40	162	100	5077YGH125P30-11	
	125	30	13			40	162	100	5077YGH125P30-13	
Swivel Casters with directional lock									Order number	
	100	30	11			40	139	100	5071PJH100P30-11	
	100	30	13			40	139	100	5071PJH100P30-13	
	100	30	11			40	139	100	5071YGH100P30-11	
	100	30	13			40	139	100	5071YGH100P30-13	
	125	30	11			40	162	100	5071PJH125P30-11	
	125	30	13			40	162	100	5071PJH125P30-13	
	125	30	11			40	162	100	5071YGH125P30-11	
	125	30	13			40	162	100	5071YGH125P30-13	



**Wheel: PJO**  
Also available with PJO  
Wheel: Wheel center made of Polypropylene, Tread: TENTEprene (thermoplastic rubber), grey non-marking, plain bearing



**Wheel: PJH**  
Wheel center: Polypropylene, Tread: TENTEprene (thermoplastic rubber), with threadguards, plain bearing



**Wheel: YGH electric conductive**  
Wheel center: Polypropylene, Tread: TENTEprene (thermoplastic rubber), with threadguards, plain bearing

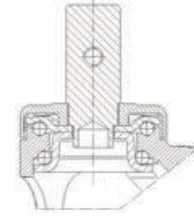


**Color options**  
These casters are available in other colors or with a grey brake pedal. Contact us for details.

# 100kg

## Design Casters Series GALEA

Housing made of Polyamide, double ball bearing swivel head  
Load capacity tested according EN 12530



	Wheel diameter [mm]	Tread width [mm]	Bolt-Ø [mm]	Bolt length [mm]	Offset [mm]	Overall height [mm]	Load capacity [kg]	
<b>Swivel Casters</b>								<b>Order number</b>
	100	30	22	40	40	139	100	<b>5070PJH100R05-22x40</b>
	100	30	28	40	40	139	100	<b>5070PJH100R05-28x40</b>
	100	30	22	40	40	139	100	<b>5070YGH100R05-22x40</b>
	100	30	28	40	40	139	100	<b>5070YGH100R05-28x40</b>
	125	30	22	40	40	162	100	<b>5070PJH125R05-22x40</b>
	125	30	28	40	40	162	100	<b>5070PJH125R05-28x40</b>
	125	30	22	40	40	162	100	<b>5070YGH125R05-22x40</b>
	125	30	28	40	40	162	100	<b>5070YGH125R05-28x40</b>
<b>Rigid Casters</b>								<b>Order number</b>
	100	30	22	40	40	139	100	<b>5098PJH100R05-22x40</b>
	100	30	28	40	40	139	100	<b>5098PJH100R05-28x40</b>
	100	30	22	40	40	139	100	<b>5098YGH100R05-22x40</b>
	100	30	28	40	40	139	100	<b>5098YGH100R05-28x40</b>
	125	30	22	40	40	162	100	<b>5098PJH125R05-22x40</b>
	125	30	28	40	40	162	100	<b>5098PJH125R05-28x40</b>
	125	30	22	40	40	162	100	<b>5098YGH125R05-22x40</b>
	125	30	28	40	40	162	100	<b>5098YGH125R05-28x40</b>
<b>Fixed Caster with wheel brake</b>								<b>Order number</b>
	100	30	22	40	40	139	100	<b>5095PJH100R05-22x40</b>
	100	30	28	40	40	139	100	<b>5095PJH100R05-28x40</b>
	100	30	22	40	40	139	100	<b>5095YGH100R05-22x40</b>
	100	30	28	40	40	139	100	<b>5095YGH100R05-28x40</b>
	125	30	22	40	40	162	100	<b>5095PJH125R05-22x40</b>
	125	30	28	40	40	162	100	<b>5095PJH125R05-28x40</b>
	125	30	22	40	40	162	100	<b>5095YGH125R05-22x40</b>
	125	30	28	40	40	162	100	<b>5095YGH125R05-28x40</b>

Fitting Options: Also available with R05-22 or R05-25.4mm solid stem.



**Wheel: PJO**  
Also available with PJO  
Wheel: Wheel center made of Polypropylene, Tread: TENTEprene (thermoplastic rubber), grey non-marking, plain bearing



**Wheel: PJH**  
Wheel center: Polypropylene, Tread: TENTEprene (thermoplastic rubber), with threadguards, plain bearing



**Wheel: YGH electric conductive**  
Wheel center: Polypropylene, Tread: TENTEprene (thermoplastic rubber), with threadguards, plain bearing

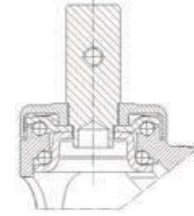


**Color options**  
These casters are available in other colors or with a grey brake pedal. Contact us for details.



# 100kg Design Casters Series GALEA

Housing made of Polyamide, double ball bearing swivel head  
Load capacity tested according EN 12530



	Wheel diameter [mm]	Tread width [mm]		Bolt-Ø [mm]	Bolt length [mm]	Offset [mm]	Overall height [mm]	Load capacity [kg]		Order number
Swivel Casters with total lock										
	100	30		22	40	40	139	100		5077PJH100R05-22x40
	100	30		28	40	40	139	100		5077PJH100R05-28x40
	100	30		22	40	40	139	100		5077YGH100R05-22x40
	100	30		28	40	40	139	100		5077YGH100R05-28x40
	125	30		22	40	40	162	100		5077PJH125R05-22x40
	125	30		28	40	40	162	100		5077PJH125R05-28x40
	125	30		22	40	40	162	100		5077YGH125R05-22x40
	125	30		28	40	40	162	100		5077YGH125R05-28x40
Swivel Casters with directional lock										Order number
	100	30		22	40	40	139	100		5071PJH100R05-22x40
	100	30		28	40	40	139	100		5071PJH100R05-28x40
	100	30		22	40	40	139	100		5071YGH100R05-22x40
	100	30		28	40	40	139	100		5071YGH100R05-28x40
	125	30		22	40	40	162	100		5071PJH125R05-22x40
	125	30		28	40	40	162	100		5071PJH125R05-28x40
	125	30		22	40	40	162	100		5071YGH125R05-22x40
	125	30		28	40	40	162	100		5071YGH125R05-28x40

All versions available with R05-22 or R05-25.4mm solid stem.



**Wheel: PJO**  
Also available with PJO  
Wheel: Wheel center made of Polypropylene, Tread: TENTEprene (thermoplastic rubber), grey non-marking, plain bearing



**Wheel: PJH**  
Wheel center: Polypropylene, Tread: TENTEprene (thermoplastic rubber), with threadguards, plain bearing



**Wheel: YGH electric conductive**  
Wheel center: Polypropylene, Tread: TENTEprene (thermoplastic rubber), with threadguards, plain bearing



**Color options**  
These casters are available in other colors or with a grey brake pedal. Contact us for details.

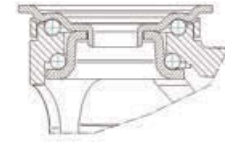
100kg

# Design Casters Series GALEA

Housing made of Polyamide, double ball bearing swivel head

Drawings of plate fittings see page 42 - 43.

Load capacity tested according EN 12530



	Wheel diameter [mm]	Tread width [mm]	Plate size [mm]	Plate hole centers [mm]	Plate hole [mm]	Offset [mm]	Overall height [mm]	Load capacity [kg]	Order number
Swivel Casters									
	100	30	95 x 70	52/44,5 x 76/72	11	40	141	100	<b>5070PJP100P52</b>
	125	30	95 x 70	52/44,5 x 76/72	11	40	163	100	<b>5070PJP125P52</b>
Swivel Casters with total lock									
	100	30	95 x 70	52/44,5 x 76/72	11	40	141	100	<b>5077PJP100P52</b>
	125	30	95 x 70	52/44,5 x 76/72	11	40	163	100	<b>5077PJP125P52</b>
Swivel Casters with directional lock									
	100	30	95 x 70	52/44,5 x 76/72	11	40	141	100	<b>5071PJP100P52</b>
	125	30	95 x 70	52/44,5 x 76/72	11	40	163	100	<b>5071PJP125P52</b>


**Wheel: PJO**

Wheel center made of Polypropylene, Tread: TENTEprene (thermoplastic rubber), grey non-marking, plain bearing


**Wheel: PJP**

Wheel center: Polypropylene, Tread: TENTEprene (thermoplastic rubber), with threadguards, precision ball bearing


**Wheel: YGP electric conductive**

Wheel center: Polypropylene, Tread: TENTEprene (thermoplastic rubber), with threadguards, precision ball bearing

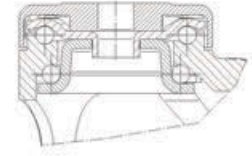

**Color options**

These casters are available in other colors or with a grey brake pedal. Contact us for details.



# 100kg Design Casters Series GALEA

Housing made of Polyamide, double ball bearing swivel head  
Load capacity tested according EN 12530



	Wheel diameter [mm]	Tread width [mm]	Center hole [mm]			Offset [mm]	Overall height [mm]	Load capacity [kg]		Order number
<b>Swivel Casters</b>										
	100	30	11			40	139	100		<b>5070PJP100P30-11</b>
	100	30	13			40	139	100		<b>5070PJP100P30-13</b>
	100	30	11			40	139	100		<b>5070YGP100P30-11</b>
	100	30	13			40	139	100		<b>5070YGP100P30-13</b>
	125	30	11			40	162	100		<b>5070PJP125P30-11</b>
	125	30	13			40	162	100		<b>5070PJP125P30-13</b>
	125	30	11			40	162	100		<b>5070YGP125P30-11</b>
	125	30	13			40	162	100		<b>5070YGP125P30-13</b>
<b>Rigid Casters</b>										Order number
	100	32	11			40	139	100		<b>5098PJP100P30-11</b>
	100	32	13			40	139	100		<b>5098PJP100P30-13</b>
	100	30	11			40	139	100		<b>5098YGP100P30-11</b>
	100	30	13			40	139	100		<b>5098YGP100P30-13</b>
	125	32	11			40	162	100		<b>5098PJP125P30-11</b>
	125	32	13			40	162	100		<b>5098PJP125P30-13</b>
	125	30	11			40	162	100		<b>5098YGP125P30-11</b>
	125	30	13			40	162	100		<b>5098YGP125P30-13</b>
<b>Fixed Caster with wheel brake</b>										Order number
	100	32	11			40	139	100		<b>5095PJP100P30-11</b>
	100	32	13			40	139	100		<b>5095PJP100P30-13</b>
	100	30	11			40	139	100		<b>5095YGP100P30-11</b>
	100	30	13			40	139	100		<b>5095YGP100P30-13</b>
	125	32	11			40	162	100		<b>5095PJP125P30-11</b>
	125	32	13			40	162	100		<b>5095PJP125P30-13</b>
	125	30	11			40	162	100		<b>5095YGP125P30-11</b>
	125	30	13			40	162	100		<b>5095YGP125P30-13</b>



**Wheel: PJO**  
Also available with PJO  
Wheel: Wheel center  
made of Polypropylene,  
Tread: TENTEprene  
(thermoplastic rubber),  
grey non-marking, plain  
bearing



**Wheel: PJP**  
Wheel center:  
Polypropylene, Tread:  
TENTEprene  
(thermoplastic rubber),  
with threadguards,  
precision ball bearing



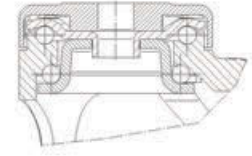
**Wheel: YGP  
electric conductive**  
Wheel center:  
Polypropylene, Tread:  
TENTEprene  
(thermoplastic rubber),  
with threadguards,  
precision ball bearing



**Color options**  
These casters are  
available in other colors  
or with a grey brake  
pedal. Contact us for  
details.

# 100kg Design Casters Series GALEA

Housing made of Polyamide, double ball bearing swivel head  
Load capacity tested according EN 12530



	Wheel diameter [mm]	Tread width [mm]	Center hole [mm]			Offset [mm]	Overall height [mm]	Load capacity [kg]		
Swivel Casters with total lock									Order number	
	100	30	11			40	139	100	<b>5077PJP100P30-11</b>	
	100	30	13			40	139	100	<b>5077PJP100P30-13</b>	
	100	30	11			40	139	100	<b>5077YGP100P30-11</b>	
	100	30	13			40	139	100	<b>5077YGP100P30-13</b>	
	125	30	11			40	162	100	<b>5077PJP125P30-11</b>	
	125	30	13			40	162	100	<b>5077PJP125P30-13</b>	
	125	30	11			40	162	100	<b>5077YGP125P30-11</b>	
	125	30	13			40	162	100	<b>5077YGP125P30-13</b>	
Swivel Casters with directional lock									Order number	
	100	30	11			40	139	100	<b>5071PJP100P30-11</b>	
	100	30	13			40	139	100	<b>5071PJP100P30-13</b>	
	100	30	11			40	139	100	<b>5071YGP100P30-11</b>	
	100	30	13			40	139	100	<b>5071YGP100P30-13</b>	
	125	30	11			40	162	100	<b>5071PJP125P30-11</b>	
	125	30	13			40	162	100	<b>5071PJP125P30-13</b>	
	125	30	11			40	162	100	<b>5071YGP125P30-11</b>	
	125	30	13			40	162	100	<b>5071YGP125P30-13</b>	



#### Whee: PJO

Also available with PJO  
Wheel: Wheel center made of Polypropylene, Tread: TENTEprene (thermoplastic rubber), grey non-marking, plain bearing



#### Wheel: PJP

Wheel center: Polypropylene, Tread: TENTEprene (thermoplastic rubber), with threadguards, precision ball bearing



#### Wheel: YGP electric conductive

Wheel center: Polypropylene, Tread: TENTEprene (thermoplastic rubber), with threadguards, precision ball bearing



#### Color options

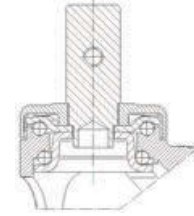
These casters are available in other colors or with a grey brake pedal. Contact us for details.





# 100kg Design Casters Series GALEA

Housing made of Polyamide, double ball bearing swivel head  
Load capacity tested according EN 12530



	Wheel diameter [mm]	Tread width [mm]	Bolt-Ø [mm]	Bolt length [mm]	Offset [mm]	Overall height [mm]	Load capacity [kg]	
<b>Swivel Casters</b>								<b>Order number</b>
	100	30	22	40	40	139	100	<b>5070PJP100R05-22x40</b>
	100	30	28	40	40	139	100	<b>5070PJP100R05-28x40</b>
	100	30	22	40	40	139	100	<b>5070YGP100R05-22x40</b>
	100	30	28	40	40	139	100	<b>5070YGP100R05-28x40</b>
	125	30	22	40	40	162	100	<b>5070PJP125R05-22x40</b>
	125	30	28	40	40	162	100	<b>5070PJP125R05-28x40</b>
	125	30	22	40	40	162	100	<b>5070YGP125R05-22x40</b>
	125	30	28	40	40	162	100	<b>5070YGP125R05-28x40</b>
<b>Rigid Casters</b>								<b>Order number</b>
	100	32	22	40	40	139	100	<b>5098PJP100R05-22x40</b>
	100	32	28	40	40	139	100	<b>5098PJP100R05-28x40</b>
	100	30	22	40	40	139	100	<b>5098YGP100R05-22x40</b>
	100	30	28	40	40	139	100	<b>5098YGP100R05-28x40</b>
	125	32	22	40	40	162	100	<b>5098PJP125R05-22x40</b>
	125	32	28	40	40	162	100	<b>5098PJP125R05-28x40</b>
	125	30	22	40	40	162	100	<b>5098YGP125R05-22x40</b>
	125	30	28	40	40	162	100	<b>5098YGP125R05-28x40</b>
<b>Fixed Caster with wheel brake</b>								<b>Order number</b>
	100	32	22	40	40	139	100	<b>5095PJP100R05-22x40</b>
	100	32	28	40	40	139	100	<b>5095PJP100R05-28x40</b>
	100	30	22	40	40	139	100	<b>5095YGP100R05-22x40</b>
	100	30	28	40	40	139	100	<b>5095YGP100R05-28x40</b>
	125	32	22	40	40	162	100	<b>5095PJP125R05-22x40</b>
	125	32	28	40	40	162	100	<b>5095PJP125R05-28x40</b>
	125	30	22	40	40	162	100	<b>5095YGP125R05-22x40</b>
	125	30	28	40	40	162	100	<b>5095YGP125R05-28x40</b>

All versions available with R05-25.4 or R05-22 solid stem.



**Wheel: PJO**  
Also available with PJO  
Wheel: Wheel center made of Polypropylene, Tread: TENTEprene (thermoplastic rubber), grey non-marking, plain bearing



**Wheel: PJP**  
Wheel center: Polypropylene, Tread: TENTEprene (thermoplastic rubber), with threadguards, precision ball bearing



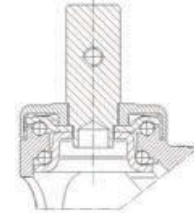
**Wheel: YGP electric conductive**  
Wheel center: Polypropylene, Tread: TENTEprene (thermoplastic rubber), with threadguards, precision ball bearing



**Color options**  
These casters are available in other colors or with a grey brake pedal. Contact us for details.

# 100kg Design Casters Series GALEA

Housing made of Polyamide, double ball bearing swivel head  
Load capacity tested according EN 12530



	Wheel diameter [mm]	Tread width [mm]		Bolt-Ø [mm]	Bolt length [mm]	Offset [mm]	Overall height [mm]	Load capacity [kg]		Order number
Swivel Casters with total lock										
	100	30		22	40	40	139	100		5077PJP100R05-22x40
	100	30		28	40	40	139	100		5077PJP100R05-28x40
	100	30		22	40	40	139	100		5077YGP100R05-22x40
	100	30		28	40	40	139	100		5077YGP100R05-28x40
	125	30		22	40	40	162	100		5077PJP125R05-22x40
	125	30		28	40	40	162	100		5077PJP125R05-28x40
	125	30		22	40	40	162	100		5077YGP125R05-22x40
	125	30		28	40	40	162	100		5077YGP125R05-28x40
Swivel Casters with directional lock										Order number
	100	30		22	40	40	139	100		5071PJP100R05-22x40
	100	30		28	40	40	139	100		5071PJP100R05-28x40
	100	30		22	40	40	139	100		5071YGP100R05-22x40
	100	30		28	40	40	139	100		5071YGP100R05-28x40
	125	30		22	40	40	162	100		5071PJP125R05-22x40
	125	30		28	40	40	162	100		5071PJP125R05-28x40
	125	30		22	40	40	162	100		5071YGP125R05-22x40
	125	30		28	40	40	162	100		5071YGP125R05-28x40

All versions available with R05-25.4 or R05-22 solid stem.



**Wheel: PJO**  
Wheel center made of Polypropylene, Tread: TENTEprene (thermoplastic rubber), grey non-marking, plain bearing



**Wheel: PJP**  
Wheel center: Polypropylene, Tread: TENTEprene (thermoplastic rubber), with threadguards, precision ball bearing



**Wheel: YGP electric conductive**  
Wheel center: Polypropylene, Tread: TENTEprene (thermoplastic rubber), with threadguards, precision ball bearing



**Color options**  
These casters are available in other colors or with a grey brake pedal. Contact us for details.



100kg

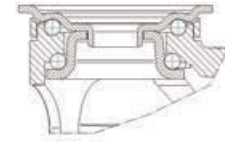


# Design Casters Series GALEA stainless

Housing made of Polyamide, double ball bearing swivel head

Drawings of plate fittings see page 42 - 43

Load capacity tested according EN 12530



	Wheel diameter [mm]	Tread width [mm]	Plate size [mm]	Plate hole centers [mm]	Plate hole [mm]	Offset [mm]	Overall height [mm]	Load capacity [kg]		Order number
<b>Swivel Casters</b>										
	100	30	77 x 67	61,5/56 x 51,5/46,5	8,5	40	137	100		<b>5080PJM100P50</b>
	100	30	95 x 70	52/44,5 x 76/72	11	40	141	100		<b>5080PJM100P52</b>
	100	30	77 x 67	61,5/56 x 51,5/46,5	8,5	40	137	100		<b>5080YGM100P50</b>
	100	30	95 x 70	52/44,5 x 76/72	11	40	141	100		<b>5080YGM100P52</b>
	125	30	77 x 67	61,5/56 x 51,5/46,5	8,5	40	159	100		<b>5080PJM125P50</b>
	125	30	77 x 67	61,5/56 x 51,5/46,5	8,5	40	159	100		<b>5080YGM125P50</b>
	125	30	95 x 70	52/44,5 x 76/72	11	40	163	100		<b>5080PJM125P52</b>
	125	30	95 x 70	52/44,5 x 76/72	11	40	163	100		<b>5080YGM125P52</b>
<b>Swivel Casters with total lock</b>										<b>Order number</b>
	100	30	77 x 67	61,5/56 x 51,5/46,5	8,5	40	137	100		<b>5087PJM100P50</b>
	100	30	95 x 70	52/44,5 x 76/72	11	40	141	100		<b>5087PJM100P52</b>
	100	30	77 x 67	61,5/56 x 51,5/46,5	8,5	40	137	100		<b>5087YGM100P50</b>
	100	30	95 x 70	52/44,5 x 76/72	11	40	141	100		<b>5087YGM100P52</b>
	125	30	77 x 67	61,5/56 x 51,5/46,5	8,5	40	159	100		<b>5087PJM125P50</b>
	125	30	95 x 70	52/44,5 x 76/72	11	40	163	100		<b>5087PJM125P52</b>
	125	30	77 x 67	61,5/56 x 51,5/46,5	8,5	40	159	100		<b>5087YGM125P50</b>
	125	30	95 x 70	52/44,5 x 76/72	11	40	163	100		<b>5087YGM125P52</b>
<b>Swivel Casters with directional lock</b>										<b>Order number</b>
	100	30	77 x 67	61,5/56 x 51,5/46,5	8,5	40	137	100		<b>5081PJM100P50</b>
	100	30	95 x 70	52/44,5 x 76/72	11	40	141	100		<b>5081PJM100P52</b>
	100	30	77 x 67	61,5/56 x 51,5/46,5	8,5	40	137	100		<b>5081YGM100P50</b>
	100	30	95 x 70	52/44,5 x 76/72	11	40	141	100		<b>5081YGM100P52</b>
	125	30	77 x 67	61,5/56 x 51,5/46,5	8,5	40	159	100		<b>5081PJM125P50</b>
	125	30	95 x 70	52/44,5 x 76/72	11	40	163	100		<b>5081PJM125P52</b>
	125	30	77 x 67	61,5/56 x 51,5/46,5	8,5	40	159	100		<b>5081YGM125P50</b>
	125	30	95 x 70	52/44,5 x 76/72	11	40	163	100		<b>5081YGM125P52</b>

**Wheel: PJM**  
Wheel center: Polypropylene, Tread: TENTEprene (thermoplastic rubber), with threadguards, plain bearing, stainless

**Wheel: PJO**  
Also available with PJO Wheel: Wheel center made of Polypropylene, Tread: TENTEprene (thermoplastic rubber), grey non-marking, plain bearing

**Wheel: YGM electric conductive, stainless**  
Wheel center: Polypropylene, Tread: TENTEprene (thermoplastic rubber), with threadguards, plain bearing, stainless

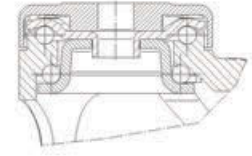
**Color options**  
These casters are available in other colors or with a grey brake pedal. Contact us for details.

100kg



# Design Casters Series GALEA stainless

Housing made of Polyamide, double ball bearing swivel head  
Load capacity tested according EN 12530



	Wheel diameter [mm]	Tread width [mm]	Center hole [mm]			Offset [mm]	Overall height [mm]	Load capacity [kg]		
<b>Swivel Casters</b>									<b>Order number</b>	
	100	30	11			40	139	100	<b>5080PJM100P30-11</b>	
	100	30	13			40	139	100	<b>5080PJM100P30-13</b>	
	100	30	11			40	139	100	<b>5080YGM100P30-11</b>	
	100	30	13			40	139	100	<b>5080YGM100P30-13</b>	
	125	30	11			40	162	100	<b>5080PJM125P30-11</b>	
	125	30	13			40	162	100	<b>5080PJM125P30-13</b>	
	125	30	11			40	162	100	<b>5080YGM125P30-11</b>	
	125	30	13			40	162	100	<b>5080YGM125P30-13</b>	
<b>Rigid Casters</b>									<b>Order number</b>	
	100	30	11			40	139	100	<b>5088PJM100P30-11</b>	
	100	30	13			40	139	100	<b>5088PJM100P30-13</b>	
	100	30	11			40	139	100	<b>5088YGM100P30-11</b>	
	100	30	13			40	139	100	<b>5088YGM100P30-13</b>	
	125	30	11			40	162	100	<b>5088PJM125P30-11</b>	
	125	30	13			40	162	100	<b>5088PJM125P30-13</b>	
	125	30	11			40	162	100	<b>5088YGM125P30-11</b>	
	125	30	13			40	162	100	<b>5088YGM125P30-13</b>	
<b>Fixed Caster with wheel brake</b>									<b>Order number</b>	
	100	30	11			40	139	100	<b>5085PJM100P30-11</b>	
	100	30	13			40	139	100	<b>5085PJM100P30-13</b>	
	100	30	11			40	139	100	<b>5085YGM100P30-11</b>	
	100	30	13			40	139	100	<b>5085YGM100P30-13</b>	
	125	30	11			40	162	100	<b>5085PJM125P30-11</b>	
	125	30	13			40	162	100	<b>5085PJM125P30-13</b>	
	125	30	11			40	162	100	<b>5085YGM125P30-11</b>	
	125	30	13			40	162	100	<b>5085YGM125P30-13</b>	

**Wheel: PJM**  
Wheel center: Polypropylene, Tread: TENTEprene (thermoplastic rubber), with threadguards, plain bearing, stainless

**Wheel PJO**  
Wheel center made of Polypropylene, Tread: TENTEprene (thermoplastic rubber), grey non-marking, plain bearing

**Wheel: YGM electric conductive, stainless**  
Wheel center: Polypropylene, Tread: TENTEprene (thermoplastic rubber), with threadguards, plain bearing, stainless

**Color options**  
These casters are available in other colors or with a grey brake pedal. Contact us for details.

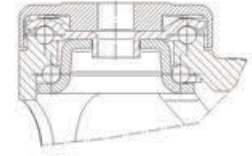


100kg



# Design Casters Series GALEA stainless

Housing made of Polyamide, double ball bearing swivel head  
Load capacity tested according EN 12530



	Wheel diameter [mm]	Tread width [mm]	Center hole [mm]			Offset [mm]	Overall height [mm]	Load capacity [kg]		Order number
Swivel Casters with total lock										
	100	30	11			40	139	100		<b>5087PJM100P30-11</b>
	100	30	13			40	139	100		<b>5087PJM100P30-13</b>
	100	30	11			40	139	100		<b>5087YGM100P30-11</b>
	100	30	13			40	139	100		<b>5087YGM100P30-13</b>
	125	30	11			40	162	100		<b>5087PJM125P30-11</b>
	125	30	13			40	162	100		<b>5087PJM125P30-13</b>
	125	30	11			40	162	100		<b>5087YGM125P30-11</b>
	125	30	13			40	162	100		<b>5087YGM125P30-13</b>
Swivel Casters with directional lock										Order number
	100	30	11			40	139	100		<b>5081PJM100P30-11</b>
	100	30	13			40	139	100		<b>5081PJM100P30-13</b>
	100	30	11			40	139	100		<b>5081YGM100P30-11</b>
	100	30	13			40	139	100		<b>5081YGM100P30-13</b>
	125	30	11			40	162	100		<b>5081PJM125P30-11</b>
	125	30	13			40	162	100		<b>5081PJM125P30-13</b>
	125	30	11			40	162	100		<b>5081YGM125P30-11</b>
	125	30	13			40	162	100		<b>5081YGM125P30-13</b>



**Wheel: PJM**  
Wheel center: Polypropylene, Tread: TENTEprene (thermoplastic rubber), with threadguards, plain bearing, stainless



**Wheel: PJO**  
PJO Wheel: Wheel center made of Polypropylene, Tread: TENTEprene (thermoplastic rubber), grey non-marking, plain bearing



**Wheel: YGM electric conductive, stainless**  
Wheel center: Polypropylene, Tread: TENTEprene (thermoplastic rubber), with threadguards, plain bearing, stainless



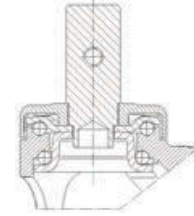
**Color options**  
These casters are available in other colors or with a grey brake pedal. Contact us for details.

100kg



# Design Casters Series GALEA stainless

Housing made of Polyamide, double ball bearing swivel head  
Load capacity tested according EN 12530



	Wheel diameter [mm]	Tread width [mm]	Bolt-Ø [mm]	Bolt length [mm]	Offset [mm]	Overall height [mm]	Load capacity [kg]		
<b>Swivel Casters</b>									<b>Order number</b>
	100	30	22	40	40	139	100		<b>5080PJM100R05-22x40</b>
	100	30	28	40	40	139	100		<b>5080PJM100R05-28x40</b>
	100	30	22	40	40	139	100		<b>5080YGM100R05-22x40</b>
	100	30	28	40	40	139	100		<b>5080YGM100R05-28x40</b>
	125	30	22	40	40	162	100		<b>5080PJM125R05-22x40</b>
	125	30	28	40	40	162	100		<b>5080PJM125R05-28x40</b>
	125	30	22	40	40	162	100		<b>5080YGM125R05-22x40</b>
	125	30	28	40	40	162	100		<b>5080YGM125R05-28x40</b>
<b>Rigid Casters</b>									<b>Order number</b>
	100	30	22	40	40	139	100		<b>5088PJM100R05-22x40</b>
	100	30	28	40	40	139	100		<b>5088PJM100R05-28x40</b>
	100	30	22	40	40	139	100		<b>5088YGM100R05-22x40</b>
	100	30	28	40	40	139	100		<b>5088YGM100R05-28x40</b>
	125	30	22	40	40	162	100		<b>5088PJM125R05-22x40</b>
	125	30	28	40	40	162	100		<b>5088PJM125R05-28x40</b>
	125	30	22	40	40	162	100		<b>5088YGM125R05-22x40</b>
	125	30	28	40	40	162	100		<b>5088YGM125R05-28x40</b>
<b>Fixed Caster with wheel brake</b>									<b>Order number</b>
	100	30	22	40	40	139	100		<b>5085PJM100R05-22x40</b>
	100	30	28	40	40	139	100		<b>5085PJM100R05-28x40</b>
	100	30	22	40	40	139	100		<b>5085YGM100R05-22x40</b>
	100	30	28	40	40	139	100		<b>5085YGM100R05-28x40</b>
	125	30	22	40	40	162	100		<b>5085PJM125R05-22x40</b>
	125	30	28	40	40	162	100		<b>5085PJM125R05-28x40</b>
	125	30	22	40	40	162	100		<b>5085YGM125R05-22x40</b>
	125	30	28	40	40	162	100		<b>5085YGM125R05-28x40</b>

All versions available with R05-25.4mm solid stem.

 <p><b>Wheel: PJM</b> Wheel center: Polypropylene, Tread: TENTEprene (thermoplastic rubber), with threadguards, plain bearing, stainless</p>	 <p><b>Wheel: PJO</b> Wheel center made of Polypropylene, Tread: TENTEprene (thermoplastic rubber), grey non-marking, plain bearing</p>	 <p><b>Wheel: YGM electric conductive, stainless</b> Wheel center: Polypropylene, Tread: TENTEprene (thermoplastic rubber), with threadguards, plain bearing, stainless</p>	 <p><b>Color options</b> These casters are available in other colors or with a grey brake pedal. Contact us for details.</p>
---	--	--	---

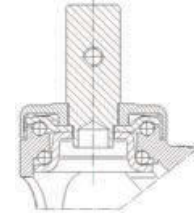


100kg



# Design Casters Series GALEA stainless

Housing made of Polyamide, double ball bearing swivel head  
Load capacity tested according EN 12530



	Wheel diameter [mm]	Tread width [mm]	Bolt-Ø [mm]	Bolt length [mm]	Offset [mm]	Overall height [mm]	Load capacity [kg]	
Swivel Casters with total lock								Order number
	100	30	22	40	40	139	100	5087PJM100R05-22x40
	100	30	28	40	40	139	100	5087PJM100R05-28x40
	100	30	22	40	40	139	100	5087YGM100R05-22x40
	100	30	28	40	40	139	100	5087YGM100R05-28x40
	125	30	22	40	40	162	100	5087PJM125R05-22x40
	125	30	28	40	40	162	100	5087PJM125R05-28x40
	125	30	22	40	40	162	100	5087YGM125R05-22x40
	125	30	28	40	40	162	100	5087YGM125R05-28x40
Swivel Casters with directional lock								Order number
	100	30	22	40	40	139	100	5081PJM100R05-22x40
	100	30	28	40	40	139	100	5081PJM100R05-28x40
	100	30	22	40	40	139	100	5081YGM100R05-22x40
	100	30	28	40	40	139	100	5081YGM100R05-28x40
	125	30	22	40	40	162	100	5081PJM125R05-22x40
	125	30	28	40	40	162	100	5081PJM125R05-28x40
	125	30	22	40	40	162	100	5081YGM125R05-22x40
	125	30	28	40	40	162	100	5081YGM125R05-28x40

All versions available with R05-22mm or R05-25.4 solid stem fitting.



**Wheel: PJM**  
Wheel center: Polypropylene, Tread: TENTEprene (thermoplastic rubber), with threadguards, plain bearing, stainless



**Wheel: PJO**  
Wheel center made of Polypropylene, Tread: TENTEprene (thermoplastic rubber), grey non-marking, plain bearing



**Wheel: YGM electric conductive, stainless**  
Wheel center: Polypropylene, Tread: TENTEprene (thermoplastic rubber), with threadguards, plain bearing, stainless



**Color options**  
These casters are available in other colors or with a grey brake pedal. Contact us for details.

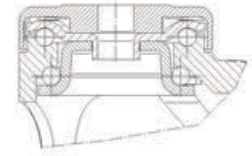
100kg



# Design Casters Series GALEA stainless

Housing made of Polyamide, double ball bearing swivel head

Load capacity tested according EN 12530



	Wheel diameter [mm]	Tread width [mm]	Center hole [mm]			Offset [mm]	Overall height [mm]	Load capacity [kg]		Order number
Swivel Casters										
	100	30	11			40	139	100		<b>5080PJO100P30-11</b>
	100	30	13			40	139	100		<b>5080PJO100P30-13</b>
	125	30	11			40	162	100		<b>5080PJO125P30-11</b>
	125	30	13			40	162	100		<b>5080PJO125P30-13</b>
Swivel Casters with total lock										Order number
	100	30	11			40	139	100		<b>5087PJO100P30-11</b>
	100	30	13			40	139	100		<b>5087PJO100P30-13</b>
	125	30	11			40	162	100		<b>5087PJO125P30-11</b>
	125	30	13			40	162	100		<b>5087PJO125P30-13</b>



**Wheel: PJO**  
Wheel center: Polypropylene, Tread: TENTEprene (thermoplastic rubber), without threadguards, plain bearing



**Small Threadguard**  
These casters are available with PIP wheel and small threadguards for the food industry (Lerpac approved).



**Grey brake pedal**  
These casters are available with grey locking lever.





100kg

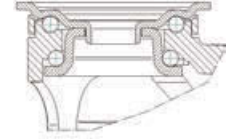


# Design Casters Series GALEA stainless

Housing made of Polyamide, double ball bearing swivel head

Drawings of plate fittings see page 42 - 43

Load capacity tested according EN 12530



	Wheel diameter [mm]	Tread width [mm]	Plate size [mm]	Plate hole centers [mm]	Plate hole [mm]	Offset [mm]	Overall height [mm]	Load capacity [kg]		Order number
<b>Swivel Casters</b>										
	100	30	77 x 67	61,5/56 x 51,5/46,5	8,5	40	137	100		<b>5080PJC100P50</b>
	100	30	95 x 70	52/44,5 x 76/72	11	40	141	100		<b>5080PJC100P52</b>
	100	30	77 x 67	61,5/56 x 51,5/46,5	8,5	40	137	100		<b>5080YGC100P50</b>
	100	30	95 x 70	52/44,5 x 76/72	11	40	141	100		<b>5080YGC100P52</b>
	125	30	77 x 67	61,5/56 x 51,5/46,5	8,5	40	159	100		<b>5080PJC125P50</b>
	125	30	95 x 70	52/44,5 x 76/72	11	40	163	100		<b>5080PJC125P52</b>
	125	30	77 x 67	61,5/56 x 51,5/46,5	8,5	40	159	100		<b>5080YGC125P50</b>
	125	30	95 x 70	52/44,5 x 76/72	11	40	163	100		<b>5080YGC125P52</b>
<b>Swivel Casters with total lock</b>										
	100	30	77 x 67	61,5/56 x 51,5/46,5	8,5	40	137	100		<b>5087PJC100P50</b>
	100	30	95 x 70	52/44,5 x 76/72	11	40	141	100		<b>5087PJC100P52</b>
	100	30	77 x 67	61,5/56 x 51,5/46,5	8,5	40	137	100		<b>5087YGC100P50</b>
	100	30	95 x 70	52/44,5 x 76/72	11	40	141	100		<b>5087YGC100P52</b>
	125	30	77 x 67	61,5/56 x 51,5/46,5	8,5	40	159	100		<b>5087PJC125P50</b>
	125	30	95 x 70	52/44,5 x 76/72	11	40	163	100		<b>5087PJC125P52</b>
	125	30	77 x 67	61,5/56 x 51,5/46,5	8,5	40	159	100		<b>5087YGC125P50</b>
	125	30	95 x 70	52/44,5 x 76/72	11	40	163	100		<b>5087YGC125P52</b>
<b>Swivel Casters with directional lock</b>										
	100	30	77 x 67	61,5/56 x 51,5/46,5	8,5	40	137	100		<b>5081PJC100P50</b>
	100	30	95 x 70	52/44,5 x 76/72	11	40	141	100		<b>5081PJC100P52</b>
	100	30	77 x 67	61,5/56 x 51,5/46,5	8,5	40	137	100		<b>5081YGC100P50</b>
	100	30	95 x 70	52/44,5 x 76/72	11	40	141	100		<b>5081YGC100P52</b>
	125	30	77 x 67	61,5/56 x 51,5/46,5	8,5	40	159	100		<b>5081PJC125P50</b>
	125	30	95 x 70	52/44,5 x 76/72	11	40	163	100		<b>5081PJC125P52</b>
	125	30	77 x 67	61,5/56 x 51,5/46,5	8,5	40	159	100		<b>5081YGC125P50</b>
	125	30	95 x 70	52/44,5 x 76/72	11	40	163	100		<b>5081YGC125P52</b>



**Wheel: PJC**

Wheel center: Polypropylene, Tread: TENTEprene (thermoplastic rubber), with threadguards, precision ball bearing, stainless



**Wheel: YGC electric conductive, stainless**

Wheel center: Polypropylene, Tread: TENTEprene (thermoplastic rubber), with threadguards, precision ball bearing, stainless



**Color options**

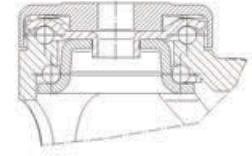
These casters are available in other colors or with a grey brake pedal. Contact us for details.

100kg



# Design Casters Series GALEA stainless

Housing made of Polyamide, double ball bearing swivel head  
Load capacity tested according EN 12530



	Wheel diameter [mm]	Tread width [mm]	Center hole [mm]			Offset [mm]	Overall height [mm]	Load capacity [kg]		
<b>Swivel Casters</b>									<b>Order number</b>	
	100	30	11			40	139	100	<b>5080PJC100P30-11</b>	
	100	30	13			40	139	100	<b>5080PJC100P30-13</b>	
	100	30	11			40	139	100	<b>5080YGC100P30-11</b>	
	100	30	13			40	139	100	<b>5080YGC100P30-13</b>	
	125	30	11			40	162	100	<b>5080PJC125P30-11</b>	
	125	30	13			40	162	100	<b>5080PJC125P30-13</b>	
	125	30	11			40	162	100	<b>5080YGC125P30-11</b>	
	125	30	13			40	162	100	<b>5080YGC125P30-13</b>	
<b>Rigid Casters</b>									<b>Order number</b>	
	100	30	11			40	139	100	<b>5088PJC100P30-11</b>	
	100	30	13			40	139	100	<b>5088PJC100P30-13</b>	
	100	30	11			40	139	100	<b>5088YGC100P30-11</b>	
	100	30	13			40	139	100	<b>5088YGC100P30-13</b>	
	125	30	11			40	162	100	<b>5088PJC125P30-11</b>	
	125	30	13			40	162	100	<b>5088PJC125P30-13</b>	
	125	30	11			40	162	100	<b>5088YGC125P30-11</b>	
	125	30	13			40	162	100	<b>5088YGC125P30-13</b>	
<b>Fixed Caster with wheel brake</b>									<b>Order number</b>	
	100	30	11			40	139	100	<b>5085PJC100P30-11</b>	
	100	30	13			40	139	100	<b>5085PJC100P30-13</b>	
	100	30	11			40	139	100	<b>5085YGC100P30-11</b>	
	100	30	13			40	139	100	<b>5085YGC100P30-13</b>	
	125	30	11			40	162	100	<b>5085PJC125P30-11</b>	
	125	30	13			40	162	100	<b>5085PJC125P30-13</b>	
	125	30	11			40	162	100	<b>5085YGC125P30-11</b>	
	125	30	13			40	162	100	<b>5085YGC125P30-13</b>	

**Wheel: PJC**  
Wheel center: Polypropylene, Tread: TENTEprene (thermoplastic rubber), with threadguards, precision ball bearing, stainless

**Wheel: PJO**  
Wheel center made of Polypropylene, Tread: TENTEprene (thermoplastic rubber), grey non-marking, plain bearing

**Wheel: YGC electric conductive, stainless**  
Wheel center: Polypropylene, Tread: TENTEprene (thermoplastic rubber), with threadguards, precision ball bearing, stainless

**Color options**  
These casters are available in other colors or with a grey brake pedal. Contact us for details.

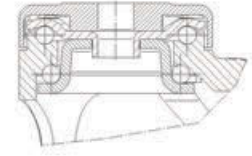


100kg



# Design Casters Series GALEA stainless

Housing made of Polyamide, double ball bearing swivel head  
Load capacity tested according EN 12530



	Wheel diameter [mm]	Tread width [mm]	Center hole [mm]			Offset [mm]	Overall height [mm]	Load capacity [kg]		Order number
Swivel Casters with total lock										
	100	30	11			40	139	100		<b>5087PJC100P30-11</b>
	100	30	13			40	139	100		<b>5087PJC100P30-13</b>
	100	30	11			40	139	100		<b>5087YGC100P30-11</b>
	100	30	13			40	139	100		<b>5087YGC100P30-13</b>
	125	30	11			40	162	100		<b>5087PJC125P30-11</b>
	125	30	13			40	162	100		<b>5087PJC125P30-13</b>
	125	30	11			40	162	100		<b>5087YGC125P30-11</b>
	125	30	13			40	162	100		<b>5087YGC125P30-13</b>
Swivel Casters with directional lock										Order number
	100	30	11			40	139	100		<b>5081PJC100P30-11</b>
	100	30	13			40	139	100		<b>5081PJC100P30-13</b>
	100	30	11			40	139	100		<b>5081YGC100P30-11</b>
	100	30	13			40	139	100		<b>5081YGC100P30-13</b>
	125	30	11			40	162	100		<b>5081PJC125P30-11</b>
	125	30	13			40	162	100		<b>5081PJC125P30-13</b>
	125	30	11			40	162	100		<b>5081YGC125P30-11</b>
	125	30	13			40	162	100		<b>5081YGC125P30-13</b>



**Wheel: PJC**  
Wheel center: Polypropylene, Tread: TENTÉprene (thermoplastic rubber), with threadguards, precision ball bearing, stainless



**Wheel: PJO**  
Also available with PJO wheels: Wheel center made of Polypropylene, Tread: TENTÉprene (thermoplastic rubber), grey non-marking, plain bearing



**Wheel: YGC electric conductive, stainless**  
Wheel center: Polypropylene, Tread: TENTÉprene (thermoplastic rubber), with threadguards, precision ball bearing, stainless



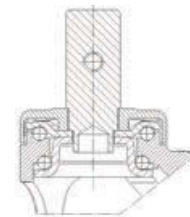
**Color options**  
These casters are available in other colors or with a grey brake pedal. Contact us for details.

100kg



# Design Casters Series GALEA stainless

Housing made of Polyamide, double ball bearing swivel head  
Load capacity tested according EN 12530



	Wheel diameter [mm]	Tread width [mm]	Bolt-Ø [mm]	Bolt length [mm]	Offset [mm]	Overall height [mm]	Load capacity [kg]		Order number
<b>Swivel Casters</b>									
	100	30	22	40	40	139	100	<b>5080PJC100R05-22x40</b>	
	100	30	28	40	40	139	100	<b>5080PJC100R05-28x40</b>	
	100	30	22	40	40	139	100	<b>5080YGC100R05-22x40</b>	
	100	30	28	40	40	139	100	<b>5080YGC100R05-28x40</b>	
	125	30	22	40	40	162	100	<b>5080PJC125R05-22x40</b>	
	125	30	28	40	40	162	100	<b>5080PJC125R05-28x40</b>	
	125	30	22	40	40	162	100	<b>5080YGC125R05-22x40</b>	
	125	30	28	40	40	162	100	<b>5080YGC125R05-28x40</b>	
<b>Rigid Casters</b>									
	100	30	22	40	40	139	100	<b>5088PJC100R05-22x40</b>	
	100	30	28	40	40	139	100	<b>5088PJC100R05-28x40</b>	
	100	30	22	40	40	139	100	<b>5088YGC100R05-22x40</b>	
	100	30	28	40	40	139	100	<b>5088YGC100R05-28x40</b>	
	125	30	22	40	40	162	100	<b>5088PJC125R05-22x40</b>	
	125	30	28	40	40	162	100	<b>5088PJC125R05-28x40</b>	
	125	30	22	40	40	162	100	<b>5088YGC125R05-22x40</b>	
	125	30	28	40	40	162	100	<b>5088YGC125R05-28x40</b>	
<b>Fixed Caster with wheel brake</b>									
	100	30	22	40	40	139	100	<b>5085PJC100R05-22x40</b>	
	100	30	28	40	40	139	100	<b>5085PJC100R05-28x40</b>	
	100	30	22	40	40	139	100	<b>5085YGC100R05-22x40</b>	
	100	30	28	40	40	139	100	<b>5085YGC100R05-28x40</b>	
	125	30	22	40	40	162	100	<b>5085PJC125R05-22x40</b>	
	125	30	28	40	40	162	100	<b>5085PJC125R05-28x40</b>	
	125	30	22	40	40	162	100	<b>5085YGC125R05-22x40</b>	
	125	30	28	40	40	162	100	<b>5085YGC125R05-28x40</b>	

Fitting Option: Also available with R05-25.4mm solid stem.

 <p><b>Wheel: PJC</b> Wheel center: Polypropylene, Tread: TENTEprene (thermoplastic rubber), with threadguards, precision ball bearing, stainless</p>	 <p><b>Wheel: PJO</b> Also available with: Wheel center made of Polypropylene, Tread: TENTEprene (thermoplastic rubber), grey non-marking, plain bearing</p>	 <p><b>Wheel: YGC electric conductive, stainless</b> Wheel center: Polypropylene, Tread: TENTEprene (thermoplastic rubber), with threadguards, precision ball bearing, stainless</p>	 <p><b>Color options</b> These casters are available in other colors or with a grey brake pedal. Contact us for details.</p>
--	---	---	---

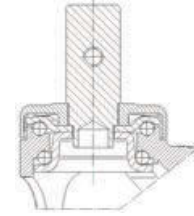


100kg




# Design Casters Series GALEA stainless

Housing made of Polyamide, double ball bearing swivel head  
Load capacity tested according EN 12530



	Wheel diameter [mm]	Tread width [mm]	Bolt-Ø [mm]	Bolt length [mm]	Offset [mm]	Overall height [mm]	Load capacity [kg]		Order number
Swivel Casters with total lock									
	100	30	22	40	40	139	100		<b>5087PJC100R05-22x40</b>
	100	30	28	40	40	139	100		<b>5087PJC100R05-28x40</b>
	100	30	22	40	40	139	100		<b>5087YGC100R05-22x40</b>
	100	30	28	40	40	139	100		<b>5087YGC100R05-28x40</b>
	125	30	22	40	40	162	100		<b>5087PJC125R05-22x40</b>
	125	30	28	40	40	162	100		<b>5087PJC125R05-28x40</b>
	125	30	22	40	40	162	100		<b>5087YGC125R05-22x40</b>
	125	30	28	40	40	162	100		<b>5087YGC125R05-28x40</b>
Swivel Casters with directional lock									
	100	30	22	40	40	139	100		<b>5081PJC100R05-22x40</b>
	100	30	28	40	40	139	100		<b>5081PJC100R05-28x40</b>
	100	30	22	40	40	139	100		<b>5081YGC100R05-22x40</b>
	100	30	28	40	40	139	100		<b>5081YGC100R05-28x40</b>
	125	30	22	40	40	162	100		<b>5081PJC125R05-22x40</b>
	125	30	28	40	40	162	100		<b>5081PJC125R05-28x40</b>
	125	30	22	40	40	162	100		<b>5081YGC125R05-22x40</b>
	125	30	28	40	40	162	100		<b>5081YGC125R05-28x40</b>

Fitting Option: Also available with R05-25.4mm solid stem.

 <p><b>Wheel: PJC</b> Wheel center: Polypropylene, Tread: TENTÉprene (thermoplastic rubber), with threadguards, precision ball bearing, stainless</p>	 <p><b>Wheel: PJO</b> Also available with PJO wheels: Wheel center made of Polypropylene, Tread: TENTÉprene (thermoplastic rubber), grey non-marking, plain bearing</p>	 <p><b>Wheel: YGC electric conductive, stainless</b> Wheel center: Polypropylene, Tread: TENTÉprene (thermoplastic rubber), with threadguards, precision ball bearing, stainless</p>	 <p><b>Color options</b> These casters are available in other colors or with a grey brake pedal. Contact us for details.</p>
--	--	---	---