



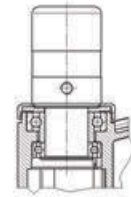
150kg Bed Casters Series LINEA

Frame made from high grade synthetic material, two precision ball bearings in swivel head
Load capacity tested according EN 12531



Swivel Casters

Wheel diameter [mm]	Tread width [mm]	Bolt-Ø [mm]	Bolt length [mm]	Offset [mm]	Overall height [mm]	Load capacity [kg]
---------------------	------------------	-------------	------------------	-------------	---------------------	--------------------



125	15	32	45	40	130	150	Order number	
150	15	32	45	47.5	155	150	5940UAP125R05-32	
							5940UAP150R05-32	

Swivel Casters with central, total or directional lock

								Order number	
--	--	--	--	--	--	--	--	---------------------	--



125	15	32	40	40	130	150	Order number	
150	15	32	42	47.5	155	150	5944UAP125R36-34XS S30	
							5944UAP150R36-34XS S30	

Swivel Casters with central-, total lock

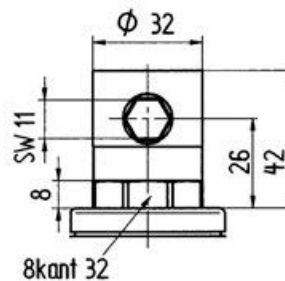
								Order number	
--	--	--	--	--	--	--	--	---------------------	--



125	15	32	42	40	130	150	Order number	
150	15	32	42	47.5	155	150	5946UAP125R36-34XS S30	
							5946UAP150R36-34XS S30	

Advantages of the fitting R36-34XS

- The stem will be vertically secured by the hexagonal bar
- Torsion will be avoided by the octagonal profile bar
- Adjustment with the frame of the bed
- Fitting screws are not necessary



Wheel: UAP
Wheel body: Polyamide.
Tread: Polyurethane, precision ball bearing.



Notice
Accessories, dimensions and technical specification see pages 221 - 223.



TÜV Certified
The performance standard of these casters surpasses even the requirements of the guidelines set in European standard DIN EN 12531.

150kg Bed Casters Series LINEA

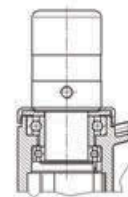
Frame made from high grade synthetic material, two precision ball bearings in swivel head
Load capacity tested according EN 12531



Swivel Casters



Wheel diameter [mm]	Tread width [mm]	Bolt-Ø [mm]	Bolt length [mm]	Offset [mm]	Overall height [mm]	Load capacity [kg]	Order number
125	15	32	45	40	130	150	5940UAP125R05-32
150	15	32	45	47.5	155	150	5940UAP150R05-32



Swivel Casters with central, total or directional lock

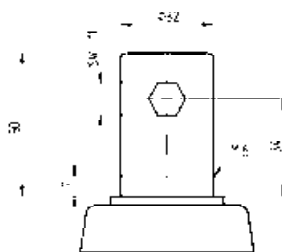


Wheel diameter [mm]	Tread width [mm]	Bolt-Ø [mm]	Bolt length [mm]	Offset [mm]	Overall height [mm]	Load capacity [kg]	Order number
125	15	32	50	40	130	150	5944UAP125R36-32S300H130
125	15	32	50	40	150	150	5944UAP125R36-32S300H150
150	15	32	50	47.5	155	150	5944UAP150R36-32S300H155
150	15	32	50	47.5	175	150	5944UAP150R36-32S300H175

Swivel Casters with central-, total lock



Wheel diameter [mm]	Tread width [mm]	Bolt-Ø [mm]	Bolt length [mm]	Offset [mm]	Overall height [mm]	Load capacity [kg]	Order number
125	15	32	50	40	130	150	5946UAP125R36-32S300H130
125	15	32	50	40	150	150	5946UAP125R36-32S300H150
150	15	32	50	47.5	155	150	5946UAP150R36-32S300H155
150	15	32	50	47.5	175	150	5946UAP150R36-32S300H175



Wheel: UAP

Wheel body: Polyamide.
Tread: Polyurethane, precision ball bearing.



Notice

Accessories, dimensions and technical specification see pages 221 - 223



TÜV Certified

The performance standard of these casters surpasses even the requirements of the guidelines set in European standard DIN EN 12531.



150kg



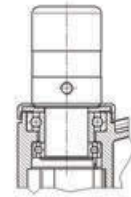
Bed Casters Series LINEA stainless

Frame made from high grade synthetic material, two precision ball bearings in swivel head
Load capacity tested according EN 12531



Swivel Casters

Wheel diameter [mm]	Tread width [mm]	Bolt-Ø [mm]	Bolt length [mm]	Offset [mm]	Overall height [mm]	Load capacity [kg]
125	15	32	45	40	130	150
125	15	32	45	40	130	150
150	15	32	45	47.5	155	150
150	15	32	45	47.5	155	150



Order number

5940UAC125R05-32
5940USC125R05-32
5940UAC150R05-32
5940USC150R05-32



Swivel Casters with central, total or directional lock

Wheel diameter [mm]	Tread width [mm]	Bolt-Ø [mm]	Bolt length [mm]	Offset [mm]	Overall height [mm]	Load capacity [kg]
125	15	32	40	40	130	150
125	15	32	40	40	130	150
150	15	32	42	47.5	155	150
150	15	32	42	47.5	155	150

Order number

5944UAC125R36-34XS S30
5944USC125R36-34XS S30
5944UAC150R36-34XS S30
5944USC150R36-34XS S30



Swivel Casters with central-, total lock

Wheel diameter [mm]	Tread width [mm]	Bolt-Ø [mm]	Bolt length [mm]	Offset [mm]	Overall height [mm]	Load capacity [kg]
125	15	32	42	40	130	150
125	15	32	42	40	130	150
150	15	32	42	47.5	155	150
150	15	32	42	47.5	155	150

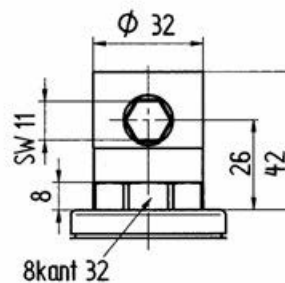
Order number

5946UAC125R36-34XS S30
5946USC125R36-34XS S30
5946UAC150R36-34XS S30
5946USC150R36-34XS S30

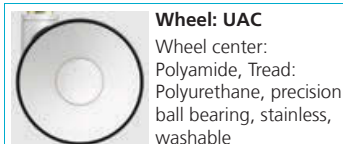


Advantages of the fitting R36-34XS

- The stem will be vertically secured by the hexagonal bar
- Torsion will be avoided by the octagonal profile bar
- Adjustment with the frame of the bed
- Fitting screws are not necessary



Washable casters must be sealed in the fitting area by the hospital bed manufacturer.



Wheel: UAC
Wheel center: Polyamide, Tread: Polyurethane, precision ball bearing, stainless, washable



Wheel: USC electric conductive, non-marking
Wheel center: Polyamide, Tread: Polyurethane, precision ball bearing, stainless, washable



Notice
Accessories, dimensions and technical specification see pages 221 - 223.



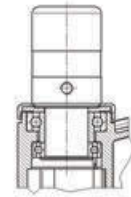
TÜV Certified
The performance standard of these casters surpasses even the requirements of the guidelines set in European standard DIN EN 12531.

150kg



Bed Casters Series LINEA stainless

Frame made from high grade synthetic material, two precision ball bearings in swivel head
Load capacity tested according EN 12531



Swivel Casters



Wheel diameter [mm]	Tread width [mm]	Bolt-Ø [mm]	Bolt length [mm]	Offset [mm]	Overall height [mm]	Load capacity [kg]	Order number
125	15	32	45	40	130	150	5940UAC125R05-32
125	15	32	45	40	130	150	5940USC125R05-32
150	15	32	45	47.5	155	150	5940UAC150R05-32
150	15	32	45	47.5	155	150	5940USC150R05-32

Swivel Casters with central, total or directional lock

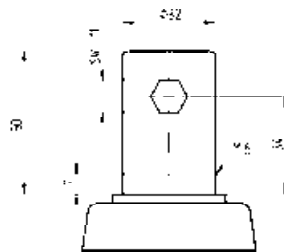


Wheel diameter [mm]	Tread width [mm]	Bolt-Ø [mm]	Bolt length [mm]	Offset [mm]	Overall height [mm]	Load capacity [kg]	Order number
125	15	32	50	40	130	150	5944UAC125R36-32S300H130
125	15	32	50	40	130	150	5944USC125R36-32S300H130
125	15	32	50	40	150	150	5944UAC125R36-32S300H150
125	15	32	50	40	150	150	5944USC125R36-32S300H150
150	15	32	50	47.5	155	150	5944UAC150R36-32S300H155
150	15	32	50	47.5	155	150	5944USC150R36-32S300H155
150	15	32	50	47.5	175	150	5944UAC150R36-32S300H175
150	15	32	50	47.5	175	150	5944USC150R36-32S300H175

Swivel Casters with central-, total lock



Wheel diameter [mm]	Tread width [mm]	Bolt-Ø [mm]	Bolt length [mm]	Offset [mm]	Overall height [mm]	Load capacity [kg]	Order number
125	15	32	50	40	130	150	5946UAC125R36-32S300H130
125	15	32	50	40	130	150	5946USC125R36-32S300H130
125	15	32	50	40	150	150	5946UAC125R36-32S300H150
125	15	32	50	40	150	150	5946USC125R36-32S300H150
150	15	32	50	47.5	155	150	5946UAC150R36-32S300H155
150	15	32	50	47.5	155	150	5946USC150R36-32S300H155
150	15	32	50	47.5	175	150	5946UAC150R36-32S300H175
150	15	32	50	47.5	175	150	5946USC150R36-32S300H175



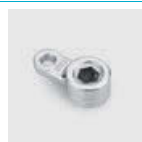
Washable casters must be sealed in the fitting area by the hospital bed manufacturer.



Wheel: UAC
Wheel center: Polyamide, Tread: Polyurethane, precision ball bearing, stainless, washable



Wheel: USC electric conductive, non-marking
Wheel center: Polyamide, Tread: Polyurethane, precision ball bearing, stainless, washable



Notice
Accessories, dimensions and technical specification see pages 221 - 223.



TÜV Certified
The performance standard of these casters surpasses even the requirements of the guidelines set in European standard DIN EN 12531.