

# 76 Series Casters

**RAPIDSTOCK**

RWM's 76 Series caster features the patented Kingpinless™ design. This is the design that RWM patented, and that has proven itself to be the best solution for demanding applications. This is the caster design that all others are now copying because it is simply unmatched in extending service life, reducing all possible causes for caster failure. The 76 Series offers up to 7000 lb. capacity and is available with a wide variety of wheels. All swivel sections are supplied with a lubrication fitting for field maintenance and is case hardened for long service life. It will not crack like through hardened or induction hardened construction provided by other caster manufacturers. Our 76 series industrial casters are proudly made in the USA! Download free 3D CAD drawings and models of this caster on our website.



76-UOT-1030-R



76-UOT-0830-S



## Features

**Raceway Design:** Patented Kingpinless™ single ball bearing precision machined raceway hardened to 53 Rockwell C minimum. Swivel section features 3" diameter raceway with 1/2" ball bearings. The notched raceway is standard.

**Capacity:** 7000 lbs

**Leg Thickness:** 3/8"

**Axle:** 3/4" bolt with lock or slotted nut as required

**Finish:** Laguna Blue paint

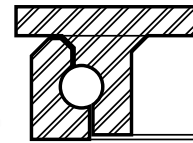
**Wheels:** Wheels are available with either a 1" roller bearing which rotates on a hardened and ground spanner bushing or 3/4" tapered bearings that rotate on the axle. All wheels are equipped with a lubrication fitting.

**Mounting Plate Size:** 5-1/4" x 7-1/4" x 3/8"

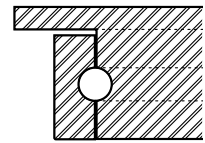
**Bolt Hole Spacing:** 3-3/8" x 5-1/4", slotted to 4-1/8" x 6-1/8"

**Mounting Bolt Diameter:** 1/2"

RWM's Raceway



Competitor's Raceway



View  
CAD Models  
On Our  
Website!

## Options

- CWB** Cam Wheel Brake
- DSL** Demountable Swivel Lock
- FG** Foot Guard
- FICWB** Field Installable Cam Wheel Brake
- HT** High Temperature Lubrication
- HTP** High Temperature Paint
- LT** Low Temperature Lubrication
- PCWB** Poly Cam Wheel Brake
- SL** Swivel Lock
- SR** Sealed Swivel Raceway
- ZP** Zinc Plated

## Applications

The 76 Series typical applications include dollies, utility carts, tow line and platform trucks. It is also ideal for:

- ◆ tow lines
- ◆ abusive conditions
- ◆ automotive
- ◆ metal fabricating
- ◆ military equipment
- ◆ tractor pulled trailers
- ◆ air cargo & ground support equipment
- ◆ boat & ship molding and building
- ◆ storage tanks & gantries
- ◆ heavy duty processing equipment and countless other heavy duty applications.
- ◆ shock load applications
- ◆ production line dollies
- ◆ aerospace
- ◆ heavy machinery
- ◆ mobile homes
- ◆ extreme duty platform trucks

### OPTIONAL MOUNTING PLATES

| Optional Top Plate Number | Mounting Plate     | Bolt Hole Spacing                                | Bolt Size |
|---------------------------|--------------------|--|-----------|
| 90ST*<br>90RT             | 6" x 7"            | 4-5/8" x 5-1/2"<br>slotted to 4-3/8" x 5-5/8"    | 1/2"      |
| 95ST*<br>95RT             | 6" x 7-1/2"        | 4-1/2" x 6"<br>slotted to 4-1/8" x 6-1/8"        | 1/2"      |
| 75ST**<br>75RT            | 4-1/2" x<br>6-1/2" | 2-7/16" x 4-15/16"<br>slotted to 3-3/8" x 5-1/4" | 1/2"      |

\* Add 1/8" OAH when using this top plate

\*\* Subtract 1/16" OAH when using this top plate



UP TO 7,000 POUND CAPACITY

## SPECIFICATIONS

| Wheel Diameter     | Wheel Width | Wheel Type             | lbs. Capacity     | Overall Height    | Swivel Caster Model Number |                   |                        | Swivel Lead | lbs. Approx Weight |      |
|--------------------|-------------|------------------------|-------------------|-------------------|----------------------------|-------------------|------------------------|-------------|--------------------|------|
|                    |             |                        |                   |                   | Straight Roller Bearing    | Ball Bearing      | Tapered Roller Bearing |             |                    |      |
| 5"                 | 2-1/2"      | Cast Iron              | 2000              | 7"                | 76-CIR-0525-S              |                   | 76-CIT-0525-S          | 2"          | 18.0               |      |
|                    |             | Cast Iron              | 1800              |                   | 76-CIR-0625-S              |                   | 76-CIT-0625-S          |             | 17.0               |      |
| 6"                 | 2-1/2"      | Durastan               | 1600              | 8"                | 76-DUR-0625-S              |                   |                        | 2-1/4"      | 11.5               |      |
|                    |             | Forged Steel           | 5000              |                   | 76-FSR-0625-S              |                   | 76-FST-0625-S          |             | 20.5               |      |
|                    |             | GT                     | 2300              |                   |                            | 76-GTB-0625-S     |                        |             | 11.5               |      |
|                    |             | Rubber on Iron         | 670               |                   | 76-RIR-0625-S              |                   |                        |             | 16.5               |      |
|                    |             | Rubber on Iron-EHT     | 810               |                   | 76-RIR-0625-S-EHT          |                   | 76-RIT-0625-S-EHT      |             | 16.5               |      |
|                    |             | Urethane on Iron       | 1620              |                   | 76-UIR-0625-S              |                   | 76-UIT-0625-S          |             | 16.5               |      |
|                    |             | V-Groove Iron          | 2500              |                   | 76-VIR-0625-S              |                   | 76-VIT-0625-S          |             | 16.5               |      |
|                    |             | Cast Iron              | 3000              |                   | 76-CIR-0630-S              |                   | 76-CIT-0630-S          |             | 2-1/4"             | 18.5 |
|                    |             | Durastan               | 2000              |                   | 76-DUR-0630-S              |                   |                        |             |                    | 12.5 |
| Forged Steel       | 7000        | 76-FSR-0630-S          |                   | 76-FST-0630-S     | 31.0                       |                   |                        |             |                    |      |
| Nylatron HD        | 7000        |                        | 76-NYB-0630-S     |                   | 12.5                       |                   |                        |             |                    |      |
| Rubber on Iron     | 680         | 76-RIR-0630-S          |                   |                   | 17.5                       |                   |                        |             |                    |      |
| Rubber on Iron-EHT | 1020        | 76-RIR-0630-S-EHT      |                   | 76-RIT-0630-S-EHT | 17.5                       |                   |                        |             |                    |      |
| Urethane on Iron   | 2000        | 76-UIR-0630-S          |                   | 76-UIT-0630-S     | 17.5                       |                   |                        |             |                    |      |
| V-Groove Forged    | 7000        | 76-VFR-0630-S          |                   | 76-VFT-0630-S     | 30.0                       |                   |                        |             |                    |      |
| 8"                 | 2-1/2"      | Cast Iron              | 2000              | 10-1/2"           | 76-CIR-0825-S              |                   | 76-CIT-0825-S          | 2-15/16"    |                    | 23.0 |
|                    |             | Durastan               | 2000              |                   | 76-DUR-0825-S              |                   |                        |             | 15.0               |      |
|                    |             | Forged Steel           | 4500              |                   | 76-FSR-0825-S              |                   | 76-FST-0825-S          |             | 25.5               |      |
|                    |             | GT                     | 2400              |                   |                            | 76-GTB-0825-S     |                        |             | 15.0               |      |
|                    |             | Rubber on Iron         | 670               |                   | 76-RIR-0825-S              |                   |                        |             | 18.5               |      |
|                    |             | Rubber on Iron-EHT     | 1005              |                   | 76-RIR-0825-S-EHT          |                   | 76-RIT-0825-S-EHT      |             | 18.5               |      |
|                    |             | Urethane on Iron       | 2000              |                   | 76-UIR-0825-S              |                   | 76-UIT-0825-S          |             | 18.5               |      |
|                    |             | V-Groove Iron          | 3000              |                   | 76-VIR-0825-S              |                   | 76-VIT-0825-S          |             | 27.0               |      |
|                    |             | Cast Iron              | 3000              |                   | 76-CIR-0830-S              |                   | 76-CIT-0830-S          |             | 2-15/16"           | 26.0 |
| Durastan           | 2500        | 76-DUR-0830-S          |                   |                   | 16.5                       |                   |                        |             |                    |      |
| Forged Steel       | 5500        | 76-FSR-0830-S          |                   | 76-FST-0830-S     | 26.0                       |                   |                        |             |                    |      |
| Infinity           | 4000        |                        | 76-UIB-0830-S-INF |                   | 20.0                       |                   |                        |             |                    |      |
| Nylatron HD        | 7000        |                        | 76-NYB-0830-S     |                   | 16.0                       |                   |                        |             |                    |      |
| Omega              | 1600        | 76-UOR-0830-S          | 76-UOB-0830-S     | 76-UOT-0830-S     | 19.0                       |                   |                        |             |                    |      |
| Rubber on Iron     | 840         | 76-RIR-0830-S          |                   |                   | 19.5                       |                   |                        |             |                    |      |
| Rubber on Iron-EHT | 1260        | 76-RIR-0830-S-EHT      |                   | 76-RIT-0830-S-EHT | 19.5                       |                   |                        |             |                    |      |
| Urethane on Iron   | 2500        | 76-UIR-0830-S          |                   | 76-UIT-0830-S     | 19.5                       |                   |                        |             |                    |      |
| V-Groove Iron      | 5000        | 76-VIR-0830-S          |                   | 76-VIT-0830-S     | 26.0                       |                   |                        |             |                    |      |
| V-Groove Forged    | 6000        | 76-VFR-0830-S          |                   | 76-VFT-0830-S     | 36.0                       |                   |                        |             |                    |      |
| 10"                | 2-1/2"      | Cast Iron              | 2500              | 12-1/2"           | 76-CIR-1025-S              |                   | 76-CIT-1025-S          | 3-3/8"      | 25.5               |      |
|                    |             | Durastan               | 2500              |                   | 76-DUR-1025-S              |                   |                        |             | 16.5               |      |
|                    |             | Rubber on Iron         | 790               |                   | 76-RIR-1025-S              |                   |                        |             | 21.5               |      |
|                    |             | Rubber on Iron-EHT     | 1185              |                   | 76-RIR-1025-S-EHT          |                   | 76-RIT-1025-S-EHT      |             | 21.5               |      |
|                    |             | Urethane on Iron       | 2370              |                   | 76-UIR-1025-S              |                   | 76-UIT-1025-S          |             | 21.5               |      |
| 10"                | 3"          | Cast Iron              | 4000              | 12-1/2"           | 76-CIR-1030-S              |                   | 76-CIT-1030-S          | 3-3/8"      | 23.0               |      |
|                    |             | Durastan               | 2900              |                   | 76-DUR-1030-S              |                   |                        |             | 20.0               |      |
|                    |             | Forged Steel           | 6000              |                   | 76-FSR-1030-S              |                   | 76-FST-1030-S          |             | 41.0               |      |
|                    |             | GT                     | 3400              |                   |                            | 76-GTB-1030-S     |                        |             | 20.0               |      |
|                    |             | Infinity               | 5000              |                   |                            | 76-UIB-1030-S-INF |                        |             | 23.0               |      |
|                    |             | Nylatron HD            | 7000              |                   |                            | 76-NYB-1030-S     |                        |             | 21.0               |      |
|                    |             | Omega                  | 2000              |                   | 76-UOR-1030-S              | 76-UOB-1030-S     | 76-UOT-1030-S          |             | 22.0               |      |
|                    |             | Rubber on Aluminum-EHT | 1500              |                   |                            | 76-RAB-1030-S-EHT | 76-RAT-1030-S-EHT      |             | 20.3               |      |
|                    |             | Rubber on Iron         | 1000              |                   | 76-RIR-1030-S              |                   |                        |             | 22.5               |      |
|                    |             | Rubber on Iron-EHT     | 1500              |                   | 76-RIR-1030-S-EHT          |                   | 76-RIT-1030-S-EHT      |             | 22.5               |      |
|                    |             | Urethane on Iron       | 3000              |                   | 76-UIR-1030-S              |                   | 76-UIT-1030-S          |             | 22.5               |      |
|                    |             | Ultra Thick Urethane   | 3400              |                   | 76-UTR-1030-S              |                   | 76-UTT-1030-S          |             | 26.0               |      |
|                    |             | V-Groove Forged        | 6000              |                   | 76-VFR-1030-S              |                   | 76-VFT-1030-S          |             | 48.0               |      |
|                    |             | V-Groove Iron          | 5000              |                   | 76-VIR-1030-S              |                   | 76-VIT-1030-S          |             | 23.0               |      |
| 12"                | 2-1/2"      | Durastan               | 3000              | 15-1/2"           | 76-DUR-1225-S              |                   | 76-RIT-1225-S          | 4-5/16"     | 20.5               |      |
|                    |             | Rubber on Iron         | 900               |                   | 76-RIR-1225-S              |                   |                        |             | 23.5               |      |
|                    |             | Urethane on Iron       | 2700              |                   | 76-UIR-1225-S              |                   |                        |             | 23.5               |      |
| 12"                | 3"          | Cast Iron              | 5000              | 15-1/2"           | 76-CIR-1230-S              |                   | 76-CIT-1230-S          | 4-5/16"     | 32.0               |      |
|                    |             | Nylatron HD            | 7000              |                   |                            | 76-NYB-1230-S     |                        |             | 26.0               |      |
|                    |             | Durastan               | 3500              |                   | 76-DUR-1230-S              |                   |                        |             | 22.5               |      |
|                    |             | Rubber on Aluminum-EHT | 1710              |                   |                            | 76-RAB-1230-S-EHT | 76-RAT-1230-S-EHT      |             | 24.5               |      |
|                    |             | Rubber on Iron         | 1140              |                   | 76-RIR-1230-S              |                   | 76-RIT-1230-S          |             | 26.5               |      |
|                    |             | Rubber on Iron-EHT     | 1710              |                   | 76-RIR-1230-S-EHT          |                   | 76-RIT-1230-S-EHT      |             | 26.5               |      |
|                    |             | Urethane on Iron       | 3400              |                   | 76-UIR-1230-S              |                   | 76-UIT-1230-S          |             | 26.5               |      |
|                    |             | Ultra Thick Urethane   | 4100              |                   | 76-UTR-1230-S              |                   | 76-UTT-1230-S          |             | 29.0               |      |
|                    |             | V-Groove Iron          | 6000              |                   | 76-VIR-1230-S              |                   | 76-VIT-1230-S          |             | 43.0               |      |

UP TO 7,000 POUND CAPACITY

To order a rigid caster, change the "S" to "R" in the model number. For example: "76-CIR-1230-R". To order a rig only, omit the blue letters. For example: "76-1230-S". Dimensions shown are nominal. If precise dimensions are required, consult your B&C representative. For approximate weight of our rigid casters, deduct 3.9 pounds.

For the most current information on our products, visit our website: [www.bandcip.com](http://www.bandcip.com)