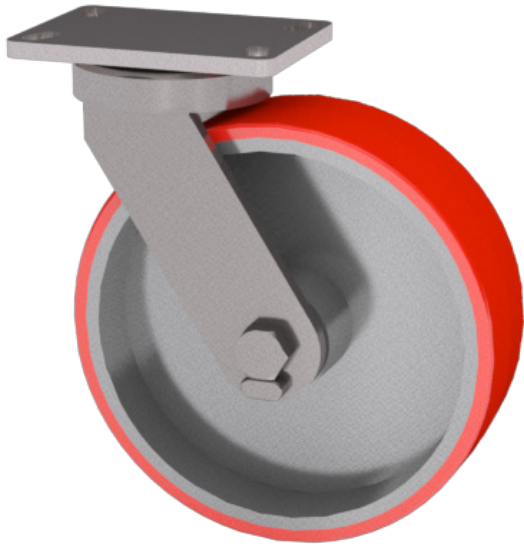


# 61

## SERIES KINGPINLESS STYLE

3,500 LBS maximum capacity



Item Shown: 61-10302-61-1

### FEATURES

**Swivel Section:** A high alloy steel swivel section features a precision machined and through hardened 3-1/4" diameter raceway with 1/2" inch ball bearings.

**Legs:** 3/8" x 2-1/2" legs are formed and continuously welded inside and outside to the yoke base

**Kingpin:** Kingpinless style design.

**Axle:** 3/4" diameter.

**Lubrication:** Pre-lubricated before shipping.

**Wheels:** 4" to 12" diameter wheels have a 1" straight roller bearing. The roller bearing rotates on a hardened and ground 1" steel spanner bushing. Tapered bearings are 3/4" I.D. with neoprene lip seals standard. Precision ball bearings are available for ergonomic applications.

**Finish:** Clear zinc plating.

### BENEFITS

The 61 Series kingpinless style swivel bearings act as both load and thrust components and lock the swivel section together to distribute the load over a larger area. The single ball race design provides easy maneuverability and longevity under high load situations. The 61 Series casters are built to long established industry standards for top plate size, bolt hole spacing and overall height.

**Sealed Swivel:**..... SSW

**Sealed Wheels:**..... SW

**Toe Guard:**..... TG

*\*For wheels with diameter >6*

### OPTIONS

**Brakes:**

Poly Lock:..... P\*

Wrap Around:..... W\*

Face Contact:..... F

Single Side:..... SS

Dual Side:..... DS

**Swivel Locks:**

Factory Installed:..... L

Demountable:..... DL

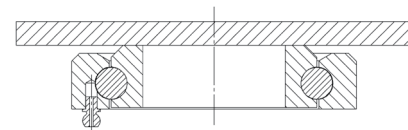
### APPLICATIONS

Floor tow lines, works-in-progress carts, trash trucks, dough troughs, fixture carts, drywall dollies, autoclave dollies, tread book trays, automotive body dollies, gantry cranes, lift truck battery handling equipment, automated guided vehicles, and conveyor systems.

Top Plate Size	Bolt Hole Spacing	Bolt Diameter
Std: 4.5 x 6.25	2.438 x 4.938 Slotted to 3.375 x 5.25	0.5
OT 70: 5.0 x 7.25 x 0.38	3.375 x 5.25 Slotted to 4.125 x 6.125	0.5
OT 75: 6.0 x 7.0 x 0.38	4.625 x 5.5	0.5
OT 80: 6.0 x 7.5 x 0.5	4.5 x 6.0	0.5

Note: OT 80 will increase OAH by 1/8"

### 61 Series Cross Sectional View



WHEEL			CAPACITY				PART NUMBER			
Dia.	Width	Material	Roller Bearing	Tapered	OAH	Swivel Lead	Straight Roller	Precision Tapered	Swivel Radius	Wt.
4	3.00	Cast Iron	2,000	2,000	5.62	1.50	<a href="#">61-04301-10-1</a>	61-04309-10-1	3.81	18.00
4	3.25	Standard Polyurethane	1,200	1,200	5.62	1.50	<a href="#">61-04321-60-1</a>	61-04329-60-1	3.86	16.00
5	2.50	Cast Iron	2,000	2,000	6.50	1.75	<a href="#">61-05251-10-1</a>	61-05259-10-1	4.43	20.00
5	2.50	Standard Polyurethane	1,325	1,325	6.50	1.75	<a href="#">61-05251-60-1</a>	61-05259-60-1	4.43	20.00
5	3.00	Standard Polyurethane	1,550	1,550	6.50	1.75	<a href="#">61-05301-60-1</a>	61-05309-60-1	4.51	22.00
6	2.50	Cast Iron	2,500	2,500	7.50	2.25	<a href="#">61-06251-10-1</a>	61-06259-10-1	5.40	22.50
6	2.50	Forged Steel	3,500	3,500	7.50	2.25	<a href="#">61-06251-20-1</a>	61-06259-20-1	5.40	22.00
6	2.50	Phenolic Resin	1,600	1,600	7.50	2.25	<a href="#">61-06251-30-1</a>	61-06259-30-1	5.40	14.50
6	2.50	Standard Polyurethane	1,625	1,625	7.50	2.25	<a href="#">61-06251-60-1</a>	61-06259-60-1	5.40	26.00
6	2.50	Mold On Rubber	550	550	7.50	2.25	<a href="#">61-06251-70-1</a>	61-06259-70-1	5.40	24.00
6	3.00	Cast Iron	2,500	2,500	7.50	2.25	<a href="#">61-06301-10-1</a>	61-06309-10-1	5.46	23.00
6	3.00	Phenolic Resin	2,000	2,000	7.50	2.25	<a href="#">61-06301-30-1</a>	61-06309-30-1	5.46	17.00
6	3.00	Standard Polyurethane	2,050	2,050	7.50	2.25	<a href="#">61-06301-60-1</a>	61-06309-60-1	5.46	15.00
6	3.00	H.D. Standard Polyurethane	2,450	2,450	7.50	2.25	<a href="#">61-06301-65-1</a>	61-06309-65-1	5.46	14.50
6	3.00	T/R Polyurethane	1,640	1,640	7.50	2.25		61-06302-61-1*	5.46	14.50
6	3.00	Mold On Rubber	675	675	7.50	2.25	<a href="#">61-06301-70-1</a>	61-06309-70-1	5.46	23.00
8	2.50	Phenolic Resin	2,000	2,000	10.12	2.25	<a href="#">61-08251-30-1</a>	61-08259-30-1	6.37	17.00
8	2.50	Standard Polyurethane	2,050	2,050	10.12	2.25	<a href="#">61-08251-60-1</a>	61-08259-60-1	6.37	23.00
8	2.50	H.D. T/R Polyurethane	1,640	1,640	10.12	2.25	<a href="#">61-08251-66-1</a>	61-08259-66-1	6.37	25.00
8	2.50	Mold On Rubber	670	670	10.12	2.25	<a href="#">61-08251-70-1</a>	61-08259-70-1	6.37	19.00
8	3.00	Forged Steel	3,500	3,500	10.12	2.25	<a href="#">61-08301-20-1</a>	61-08309-20-1	6.43	29.00
8	3.00	Cast Iron	3,500	3,500	10.12	2.25	<a href="#">61-08301-10-1</a>	61-08309-10-1	6.43	39.00
8	3.00	Phenolic Resin	2,500	2,500	10.12	2.25	<a href="#">61-08301-30-1</a>	61-08309-30-1	6.43	19.00
8	3.00	Standard Polyurethane	2,520	2,520	10.12	2.25	<a href="#">61-08301-60-1</a>	61-08309-60-1	6.43	27.00
8	3.00	T/R Polyurethane		2,000	10.12	2.25		61-08302-61-1*	6.43	27.00
8	3.00	H.D. Standard Polyurethane	3,100	3,100	10.12	2.25	<a href="#">61-08301-65-1</a>	61-08309-65-1	6.43	25.00
8	3.00	H.D. T/R Polyurethane	2,500	2,500	10.12	2.25	<a href="#">61-08301-66-1</a>	61-08309-66-1	6.43	25.00
8	3.00	Mold On Rubber	840	840	10.12	2.25	<a href="#">61-08301-70-1</a>	61-08309-70-1	6.43	24.00
10	3.00	Cast Iron	3,500	3,500	11.50	3.00	<a href="#">61-10301-10-1</a>	61-10309-10-1	8.14	42.00
10	3.00	Phenolic Resin	2,900	2,900	11.50	3.00	<a href="#">61-10301-30-1</a>	61-10309-30-1	8.14	21.00
10	3.00	Standard Polyurethane	3,000	3,000	11.50	3.00	<a href="#">61-10301-60-1</a>	61-10309-60-1	8.14	32.00
10	3.00	T/R Polyurethane		2,400	11.50	3.00		61-10302-61-1*	8.14	32.00
10	3.00	H.D. Standard Polyurethane	3,500	3,500	11.50	3.00	<a href="#">61-10301-65-1</a>	61-10309-65-1	8.14	37.00
10	3.00	H.D. T/R Polyurethane	2,750	2,750	11.50	3.00	<a href="#">61-10301-66-1</a>	61-10309-66-1	8.14	37.00
10	3.00	Mold On Rubber	1,000	1,000	11.50	3.00	<a href="#">61-10301-70-1</a>	61-10309-70-1	8.14	37.00
12	3.00	Phenolic Resin	3,500	3,500	13.50	3.00	<a href="#">61-12301-30-1</a>	61-12309-30-1	9.12	30.00
12	3.00	Standard Polyurethane	3,500	3,500	13.50	3.00	<a href="#">61-12301-60-1</a>	61-12309-60-1	9.12	41.00
12	3.00	Mold On Rubber	1,125	1,125	13.50	3.00	<a href="#">61-12301-70-1</a>	61-12309-70-1	9.12	32.00

Capacity listed is for manual operation. For powered operations, consult factory.

Part Numbers listed are for the swivel caster. For rigid casters, change series to 65 and change the last digit from 1 to 2 (i.e. 65-10309-60-2).

Estimated weight is for swivel caster. Deduct 20 percent of swivel caster weight for rigid casters.

\*These casters have precision ball bearings.

All dimensions are in inches. All weights are in pounds.