

112 SERIES MEDIUM HEAVY DUTY

1,500 ^{lbs} maximum capacity




Item Shown: SP13062321

FEATURES

Swivel Section: Sealed precision ball bearing with hardened raceways and neoprene seals.

Legs: 1/4" x 2" steel, formed and continuously welded on the inside and outside of the yoke base.

Kingpin: Kingpinless style design.

Axle: 1/2" diameter.

Lubrication: Sealed ball bearing is lubricated and requires zero maintenance.

Wheels: 6" to 10" diameter wheels are available with sealed precision ball bearings.

Finish: Clear zinc plating.

BENEFITS

The 112 series dual swivel section is maintenance free with its sealed precision ball bearing in the swivel section and in the wheels. The dual swivel action reduces castering effect, making it possible for a cart to go forwards and back in a straight line. This improves maneuverability in tight spaces and help reduce ergonomic push/pull forces.

APPLICATIONS

Excellent for production racks and fixtures, parts bins, conveyor systems, and other applications where maintenance free casters and ergonomics are concerns. Also works well for carts and Automated Guided Vehicles that need to maneuver in tight spaces.

OPTIONS

Brakes:

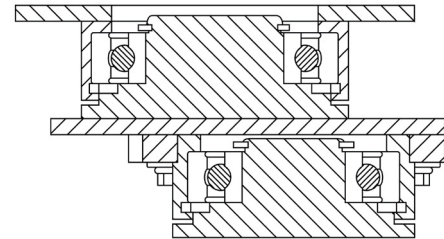
Cam: C
 Poly Lock: P*
 Face Contact: F

Toe Guard: TG

*For wheels with diameter ≥6

Top Plate Size	Bolt Hole Spacing	Bolt Diameter
Std: 4.5 x 6.25	2.438 x 4.938 Slotted to 3.375 x 5.25	0.5
OT 70: 5.0 x 7.25	3.375 x 5.25 Slotted to 4.125 x 6.125	0.5

112 Series Cross Sectional View



WHEEL			CAPACITY			PART NUMBER		
Dia.	Width	Material	Precision Ball	OAH	Swivel Lead	Precision Ball	Swivel Radius	Wt.
6	2	ErgoTread	910	9.875	4.25	112-06202-40-1	7.32	22.30
6	2	T/R Polyurethane	960	9.875	4.25	112-06202-61-1	7.32	22.30
6	2	T/R-95 Polyurethane	1,400	9.875	4.25	112-06202-91-1	7.32	22.30
6	2	HPPT Polyurethane	1,500	9.875	4.25	112-06202-90-1	7.32	22.30
8	2	ErgoTread	1,178	12.5	4.25	112-08202-40-1	8.31	26.30
8	2	T/R Polyurethane	1,240	12.5	4.25	112-08202-61-1	8.31	26.30
8	2	T/R-95 Polyurethane	1,500	12.5	4.25	112-08202-91-1	8.31	26.30
8	2	HPPT Polyurethane	1,500	12.5	4.25	112-08202-90-1	8.31	26.30
10	2	ErgoTread	1,500	13.88	4.25	112-10202-44-1	9.30	30.30
10	2	T/R Polyurethane	1,500	13.88	4.25	112-10202-93-1	9.30	30.30
10	2	T/R-95 Polyurethane	1,500	13.88	4.25	112-10202-94-1	9.30	30.30

Capacity listed is for manual operation. For powered operations, consult factory.
All dimensions are in inches. All weights are in pounds.

